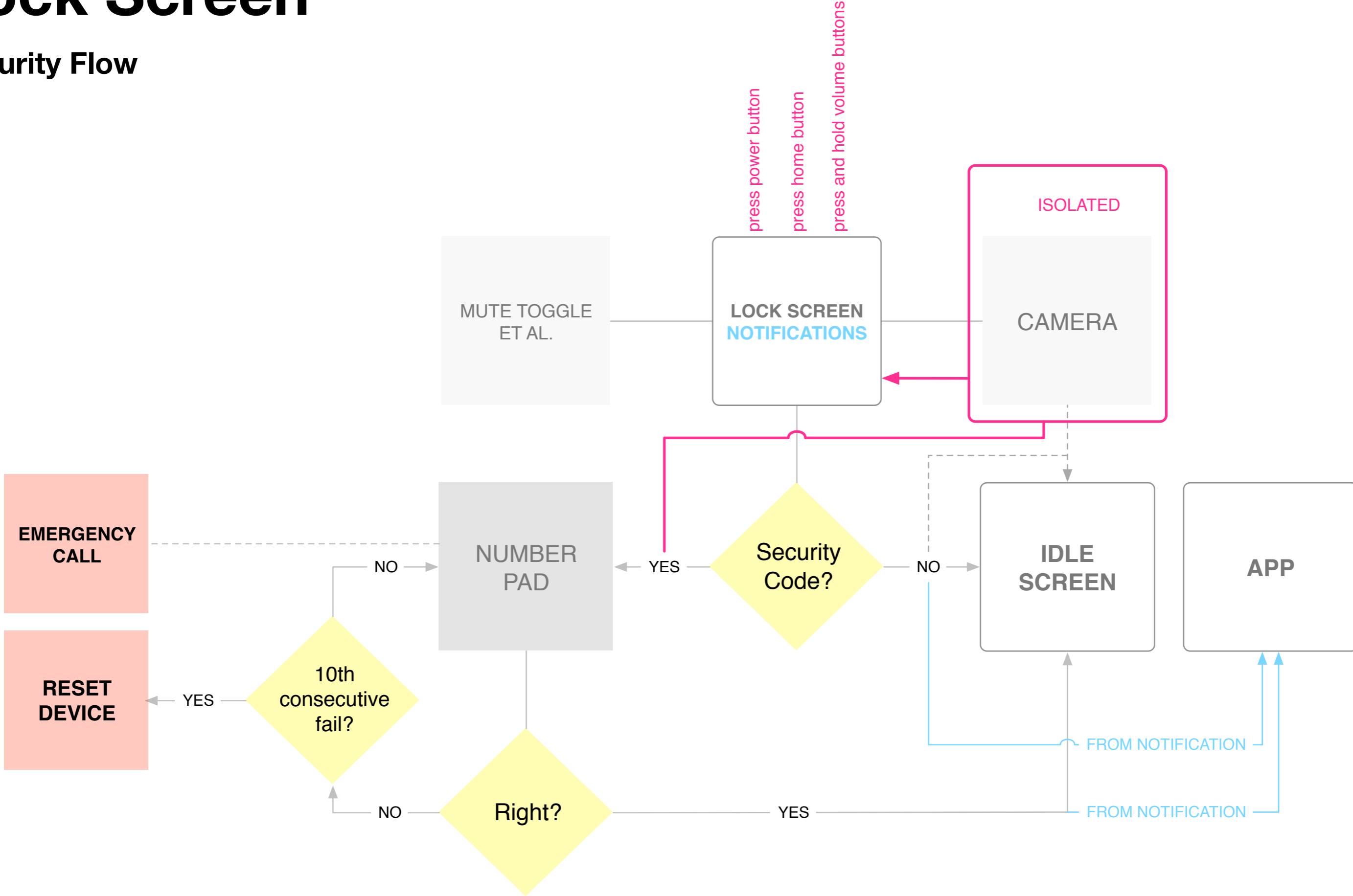


Open Web Device

Lock Screen

Lock Screen

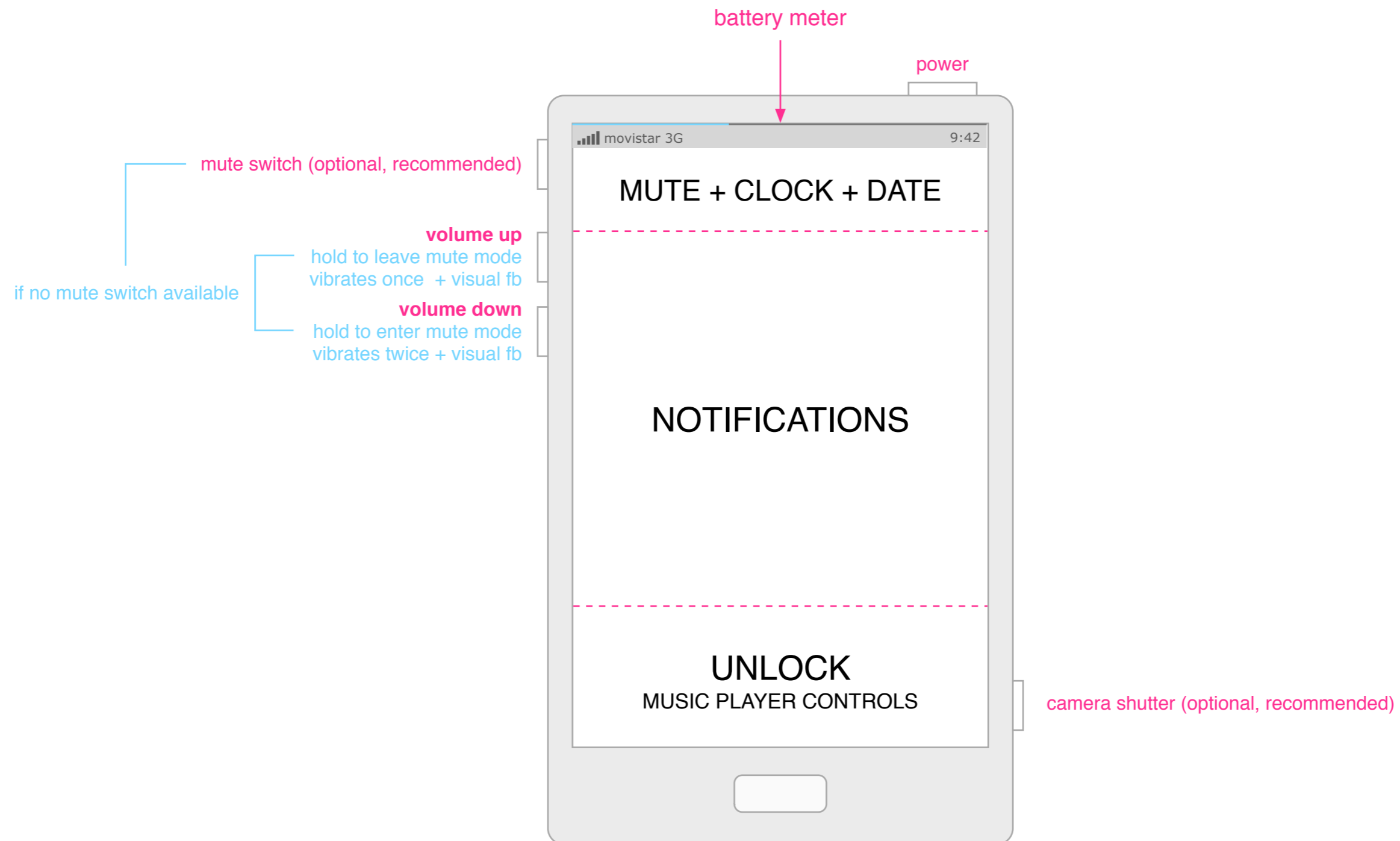
Security Flow



Lock Screen

Main Regions

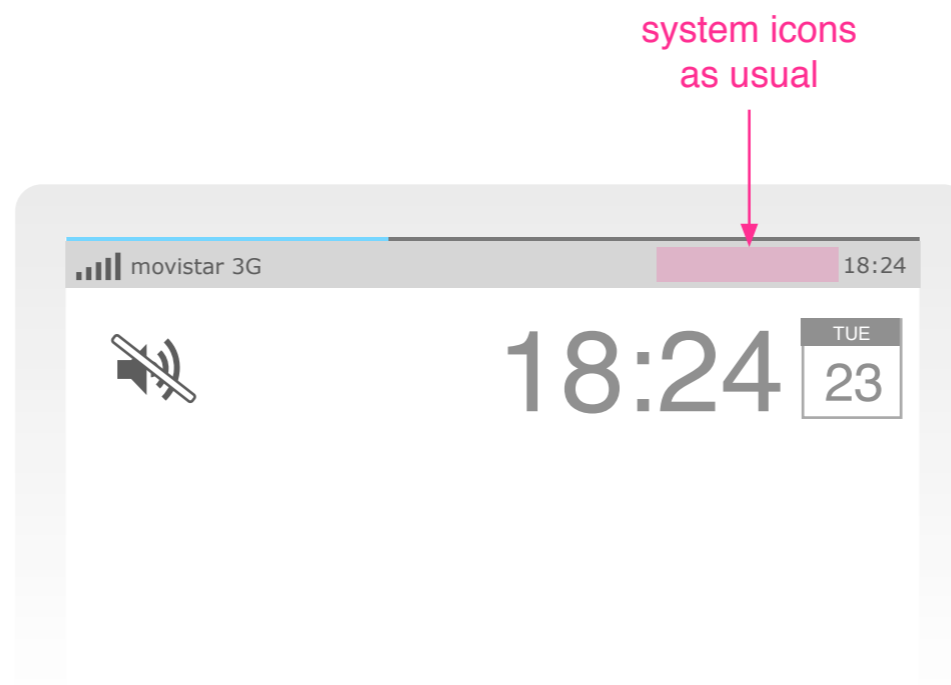
A dedicated mute switch and camera shutter are both recommended



Lock Screen

Clock, Date, Info

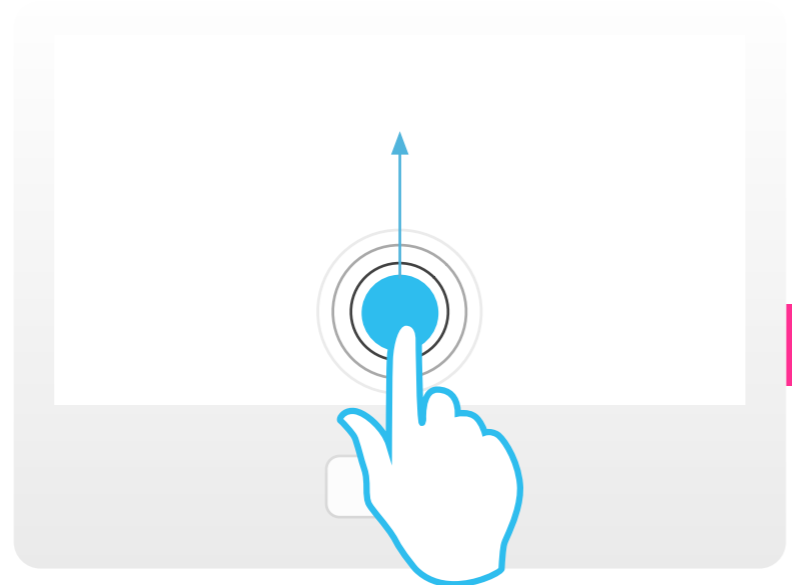
(The clock/date design is just a placeholder)



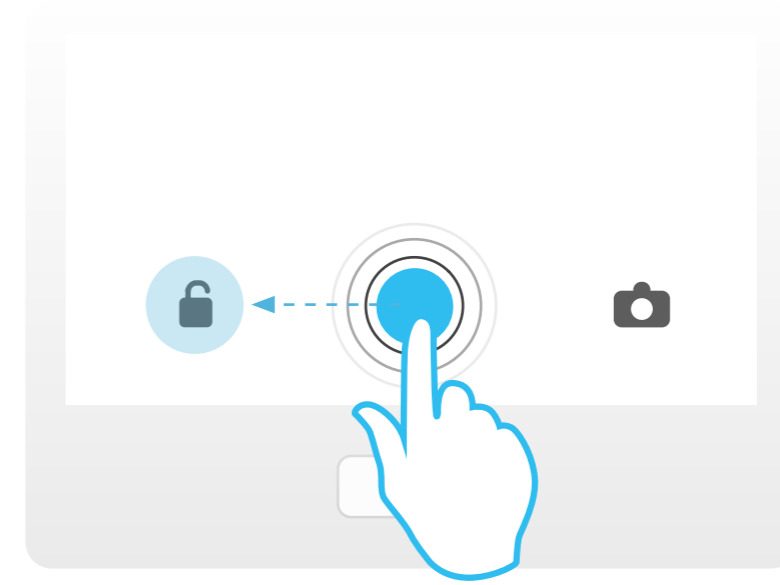
Lock Screen

Unlock Gestures

Different options depending on hardware button availability. Tapping instead of dragging will display hints (like an animated arrow)



with hardware button for camera

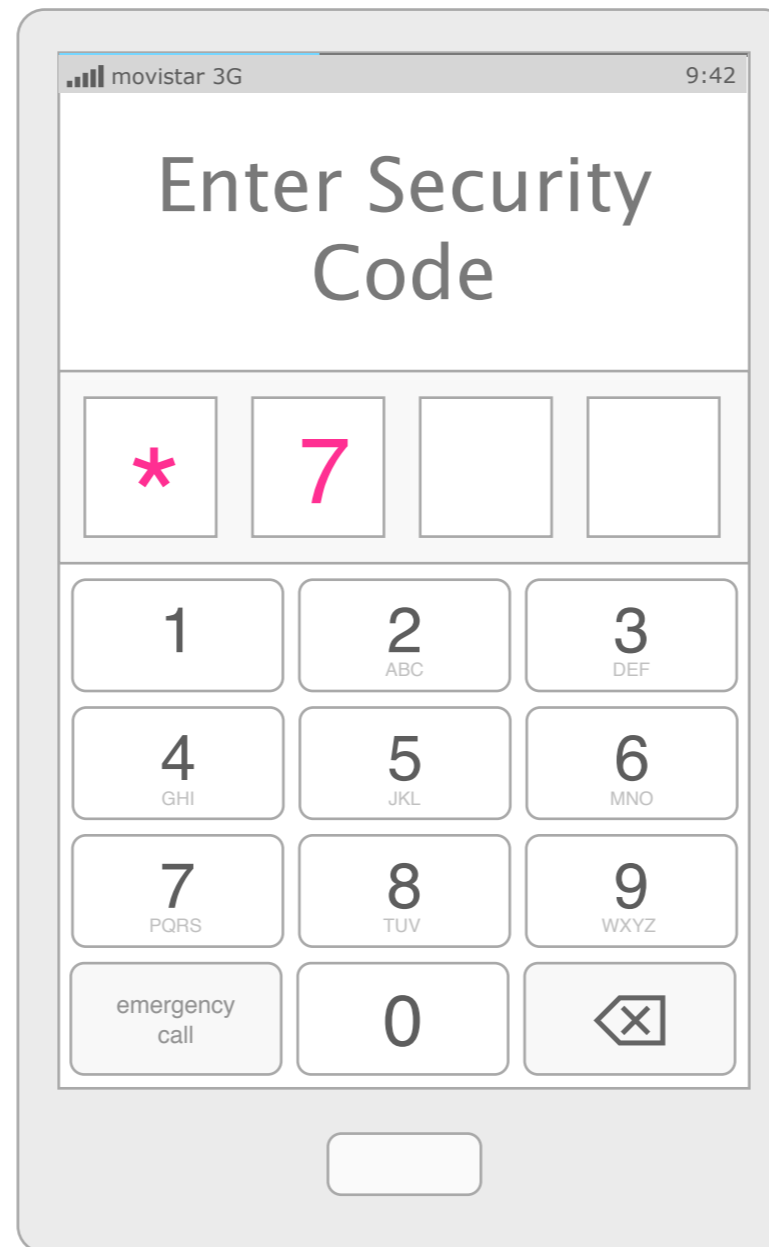


no hardware button for camera

Lock Screen

Entering PIN Code

Consecutive attempts could be delayed if we're providing some sort of remote wiping functionality.

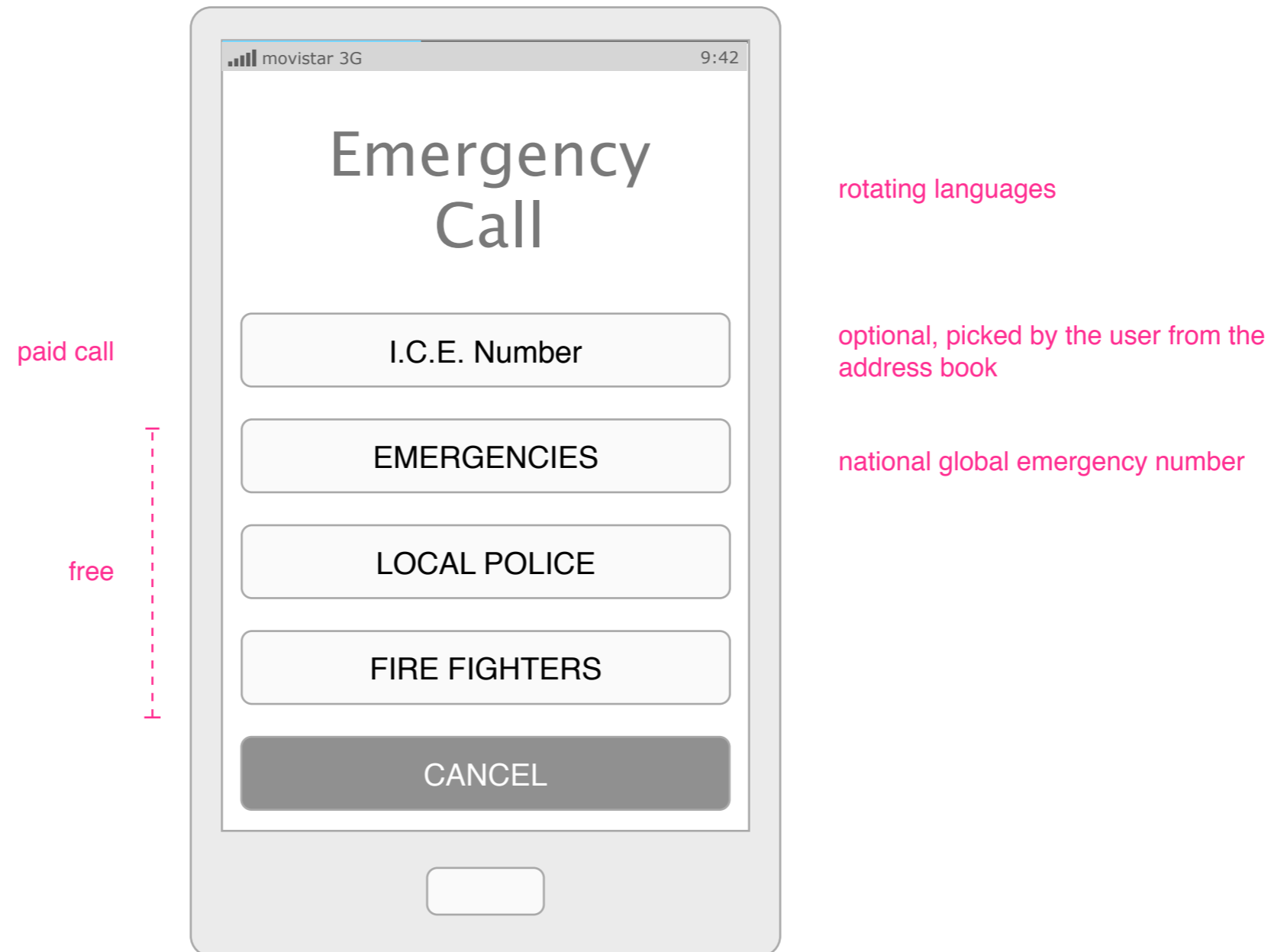


cancel when empty

Lock Screen

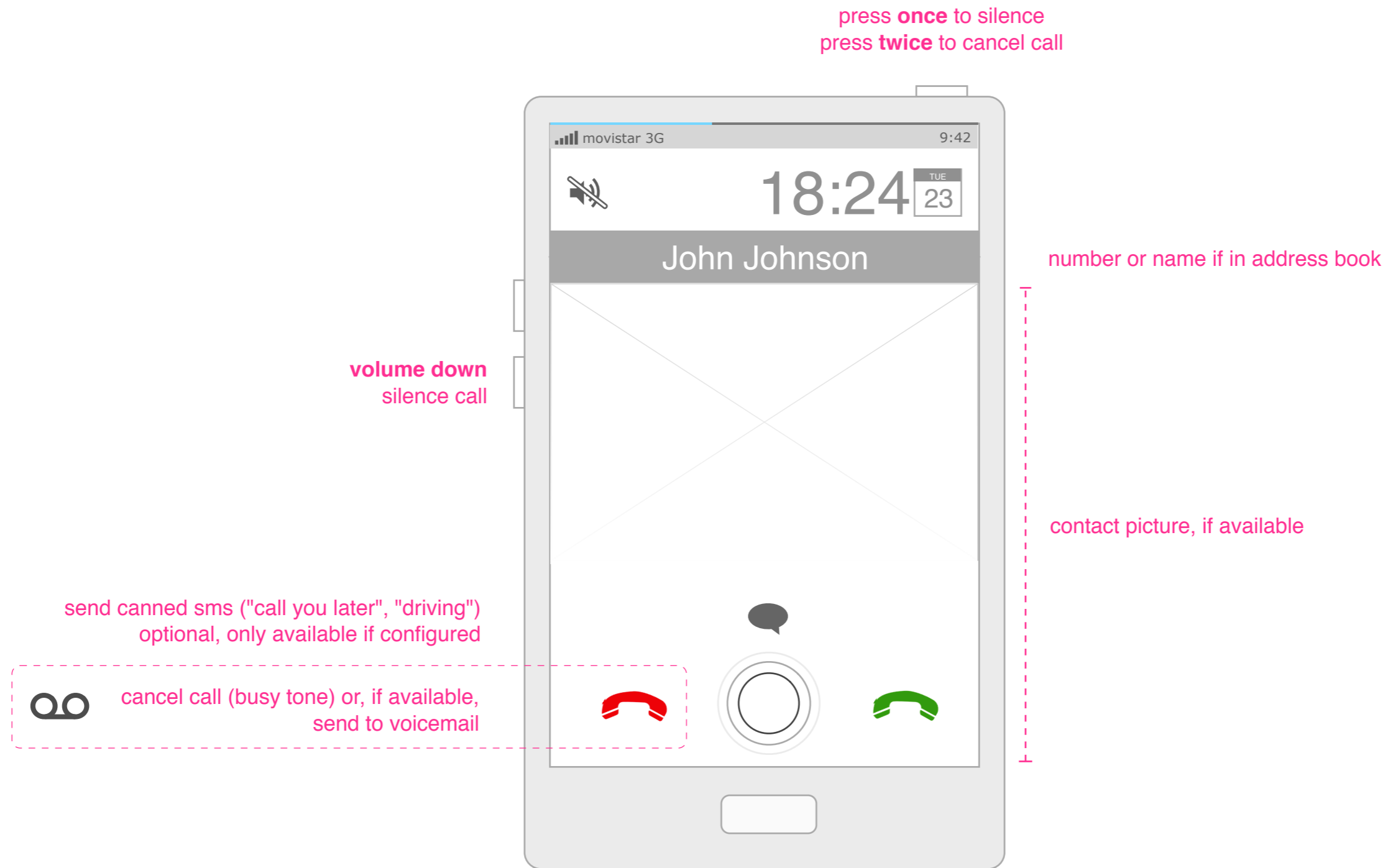
Emergency Call

No keypad; just a list of common **local (even if abroad)** emergency numbers plus (optionally) one chosen by the user (mother, husband, etc.), which could be useful in mild emergencies or lost phone cases.



Lock Screen

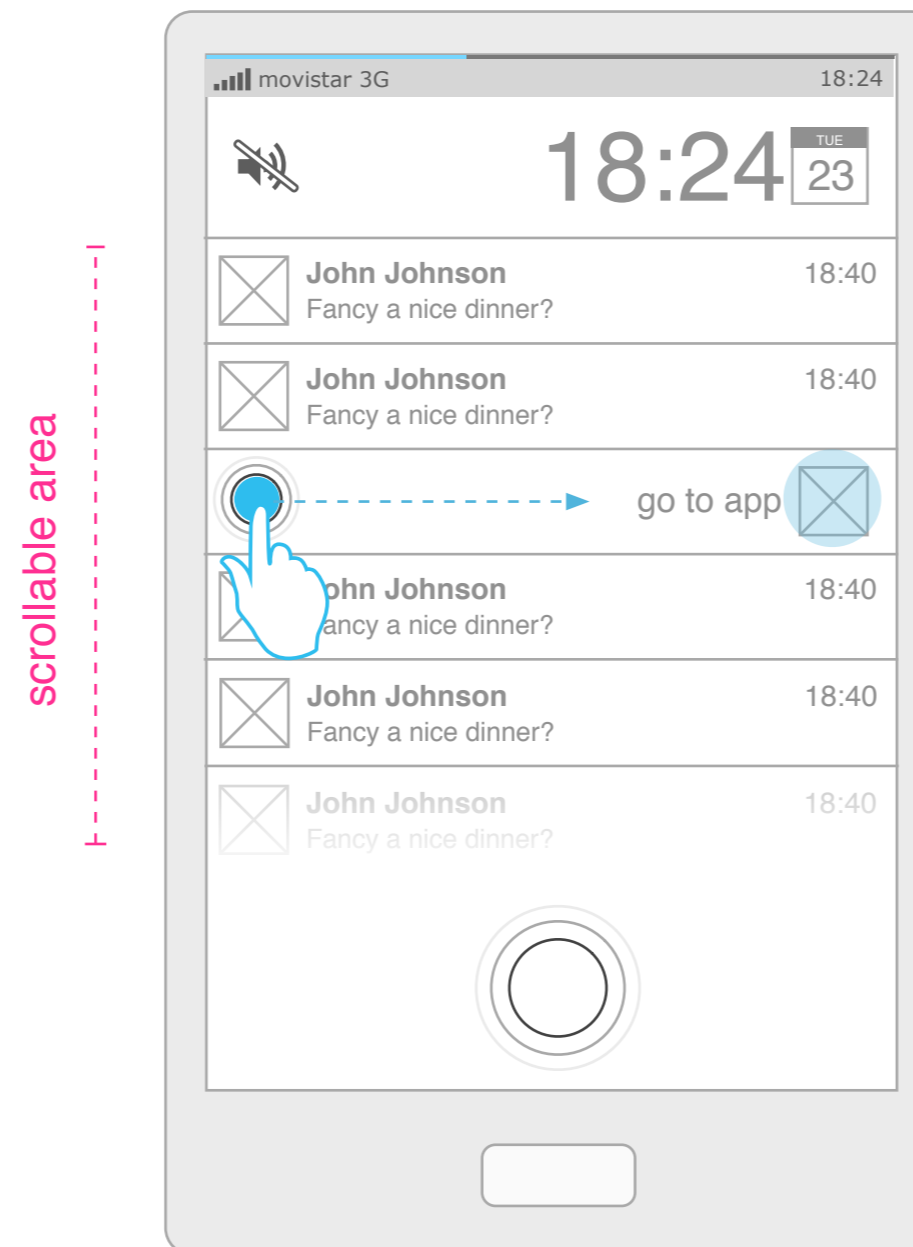
Incoming Phone Call



Lock Screen

Notifications

These notifications clear once the device is unlocked.

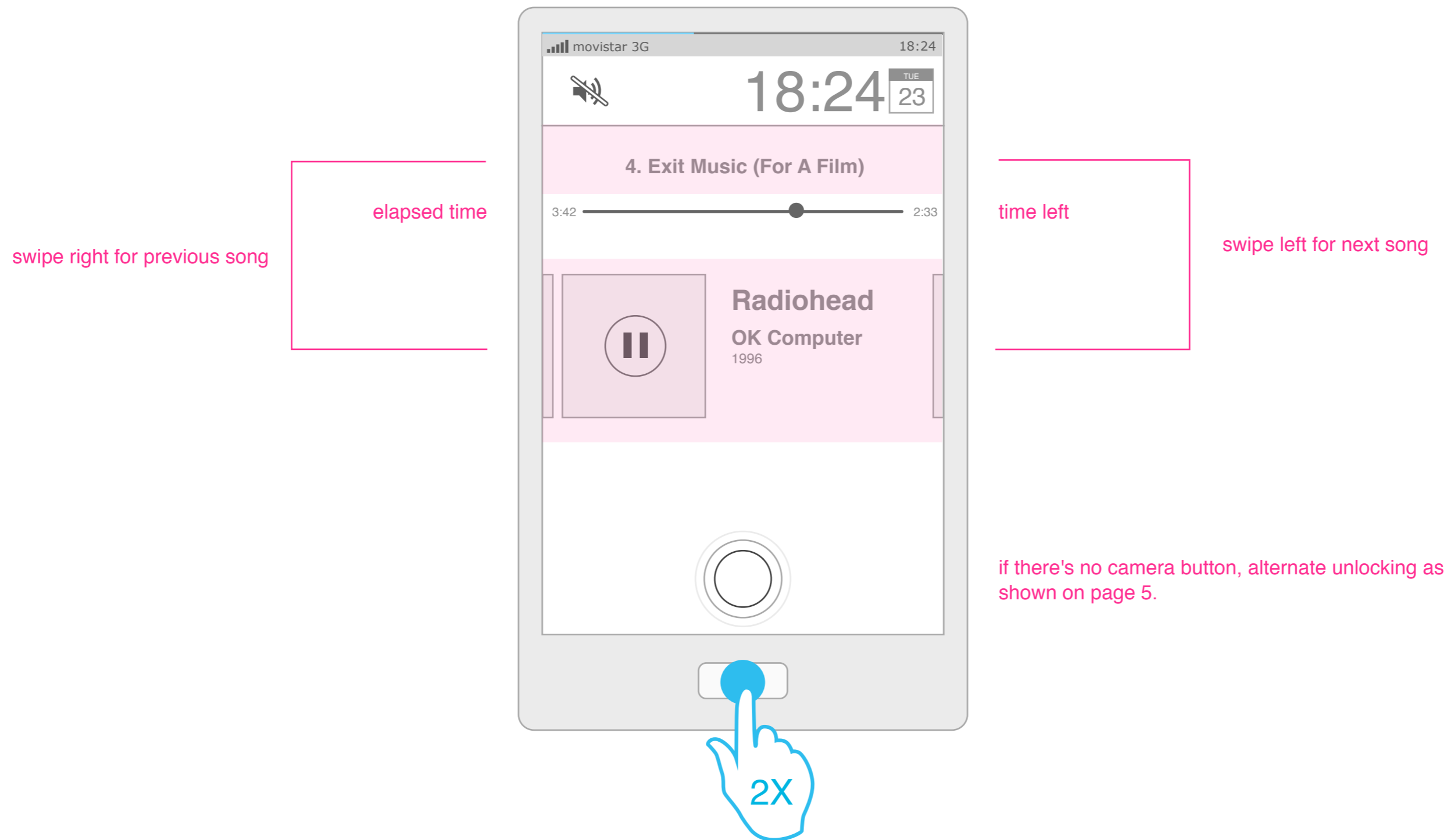


tapping a notifications allows for
unlocking via swipe

Lock Screen

Music Player Controls

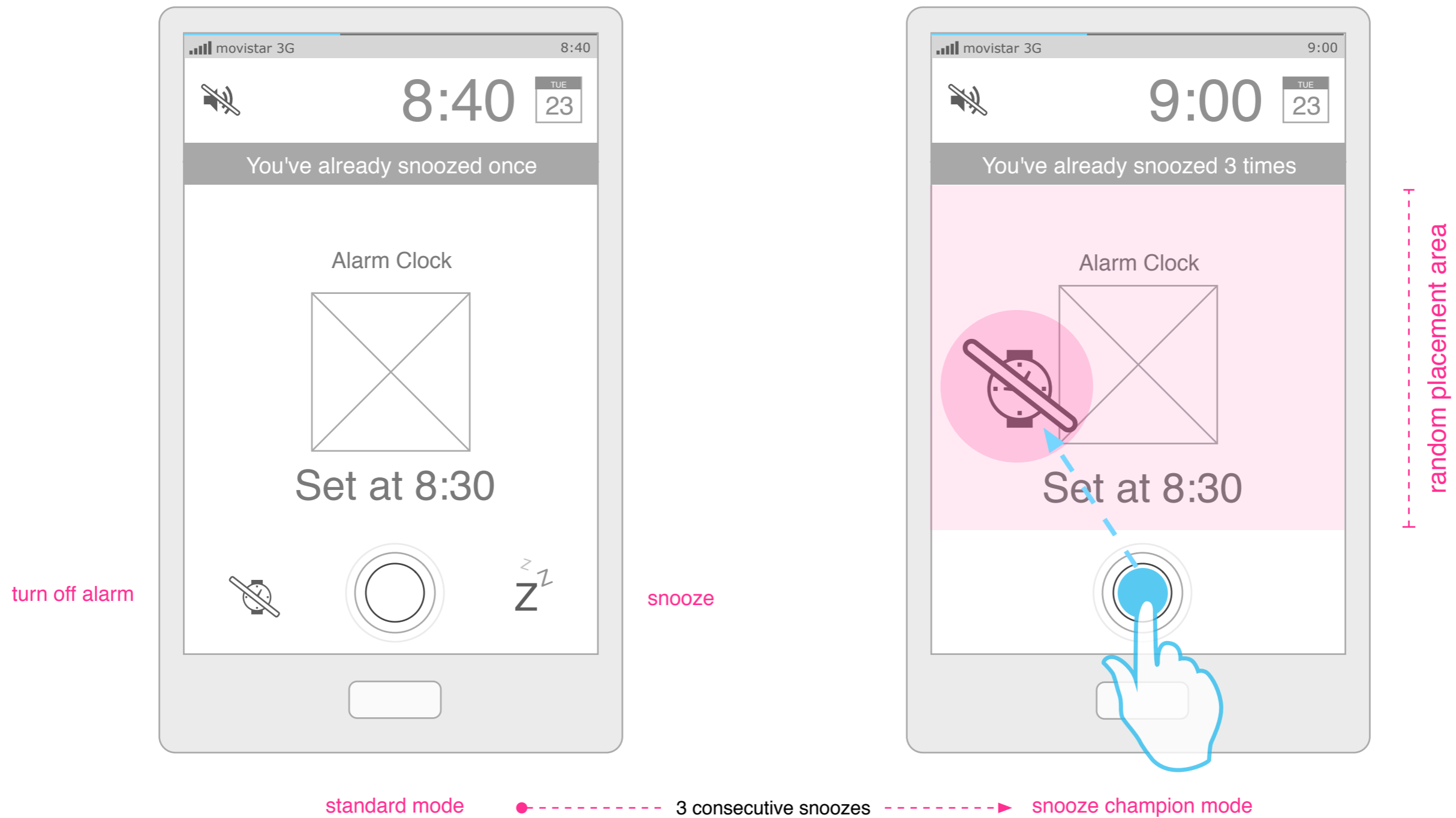
Double tapping the home button while on the lock screen **toggles** between notifications and music player controls.



Lock Screen

Alarm

Two modes of difficulty to unlock. Maybe transition between them after a certain number of snoozes.



Lock Screen

Timer

