



# MozillaTranslator v5.20

## Table of Contents

User Guide.....	3
Introduction.....	3
Installation.....	3
First run.....	4
Products, CVS and JAR.....	4
Updating the product.....	4
Editing strings.....	5
Editing phrases and images.....	6
Searches, auto translation, and queries, a lot of queries.....	7
Labels, commandkeys and accesskeys.....	8
Exporting JAR, XPI and CVS.....	9
Migrating a product.....	9
Working in group.....	10
Menu Reference Guide.....	11
File Menu.....	11
Manage Products.....	11
CVS info panel.....	12
JAR info panel.....	12
Update Products.....	12
Save Glossary.....	13
Save Settings.....	13
Setup.....	13
General Tab.....	13
Key Connection Tab.....	14
License Tab.....	15
Import/export Tab.....	15
Advanced Tab.....	16
Quit.....	16
Import menu.....	16
Import Partial Glossary.....	16
Import File.....	17
Import Translation from JAR.....	17
Import Translation from CVS.....	17
Export menu.....	18
Export Partial Glossary.....	18
Export File.....	18
Create XPI File.....	18
Localizing the XPI installation messages.....	19
Create JAR File.....	19

Export in XML Format.....	20
...File.....	20
...Component.....	20
...Glossary.....	20
Export CVS Translation.....	20
Edit Menu.....	21
Chrome View.....	21
The Show What dialog.....	21
The Chrome View Window.....	24
The tool bar.....	24
The tree.....	25
The Content tab in non-image files.....	25
The Content tab in image files.....	26
The Information tab.....	26
QA Queries.....	26
Untranslated Strings.....	26
Check Keep Original with trns.....	27
View Original == Translated.....	27
Check Variables.....	27
Check Key binding.....	27
View DONT_TRANSLATE not honored.....	28
All above at once.....	28
Redundant Strings.....	28
Search Translation Inconsistency.....	28
Search similar strings (experimental).....	29
Relink Labels & Keys.....	29
Clear Fuzzy Flag.....	29
View Fuzzy.....	30
View Binary.....	30
Search.....	30
Advanced Search.....	30
Replace.....	30
Edit Selected Phrase.....	31
Basic Tab.....	31
Advanced Tab.....	31
QA results Tab.....	32
Auto-Translate.....	32
Advanced Menu.....	32
Migrate Product.....	32
Assign License.....	33
Help Menu.....	33
About MozillaTranslator.....	33
Keyboard shortcut reference.....	34
Main menu options accelerator keys.....	34
Common options shortcuts.....	34

# User Guide

## Introduction

MozillaTranslator is a Java application designed for helping localizers in maintaining and leverage their work with Mozilla based applications.

## Installation

Follow these steps:

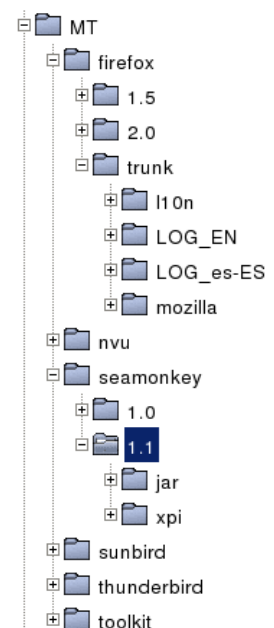
1. Get the most recent ZIP at MozillaTranslator page at SourceForge.net: (<http://www.sourceforge.net/projects/moztrans/>).
2. Unzip it in an empty directory (for example, "MT").
3. Make sure you have a working Java Runtime Environment 1.4.2 or better (you can get Sun's JRE at <http://www.java.com/>).
4. To run MozillaTranslator on Windows, just double click on the JAR file. On other graphic environments, you could do the same.
5. If the above doesn't work in your system, you can run it from the console shell (whether Windows or Unix): `java -jar mt5xx.jar`, where `mt5xx.jar` represents the exact name of the JAR file.

**Note:** if you are going to work with really big glossaries (a Glossary.zip about 4 MBytes, that's two full SeaMonkey products loaded into the glossary), you'll need to use java command line options `-Xms` and `-Xmx`, for example:

```
java -Xms64m -Xmx256m -jar mt5xx.jar
```

MozillaTranslator (from herein, "MT") looks for their data and preferences files in the current working directory, so if you separate translations in several directories, you may run MT with commands like: `java -jar ../../mt5xx.jar` and so.

On the right side you have a **proposed** (not mandatory in any way) directory structure in case you want to keep separated data from different translations. In that proposal, every combination of product and version (e.g.: SeaMonkey 1.1, Firefox trunk, etc.) lives on a separate directory.



Products based on CVS sources have two directories (l10n and Mozilla) with the CVS checkouts of ab-CD and en-US for that product; in the example there are also two directories for diff logs of each CVS checkout (ab-CD is shown as es-ES).

Products based on JAR sources may want to use a JAR directory to put exported JARs, and a XPI directory for exported XPIs.

### ***First run***

After the main window opens, you should pay a visit to the **File | Setup** menu option. This allows you to set MT preferences regarding QA (quality assurance) features, key connections (binding between labels and associated accel key), workarounds for ZIP permissions in XPIs, etc. For detailed information, see the Reference Guide after this User Guide.

The preferences are saved in a file named `mozillatranslator.properties`. Your work in localizations will be saved in a file named `Glossary.zip`, which contains some directories for images (if there is any present in the translation), and a `glossary.txt` file with info from any other file (DTD, Properties, (X)HTML, etc.) of each and every product defined.

### ***Products, CVS and JAR***

MT works with Products, and you need to create at least one product. You can think a product represents the group of localizable files used by an application. For each product you can collect the files archived in compressed, specially crafted JAR files (as *special* as Mozilla products require and ship with, nothing else; e.g.: `en-US.jar`), or in a directory and all of its subdirectories (which is used with a CVS repository).

You may have just one directory (and, thus, just one `Glossary.zip`), with all products you are going to translate, or you may have different directories for each product, with all versions in the same `Glossary.zip`. Or you may even separate both products and versions on their own `Glossary.zip`, as the proposal shown in Installation section.

### ***Updating the product***

Right after creating a new product, and every time you want to update it (because of new product versions in JAR-based products or recent changes to CVS products), you will have to run **File | Update Product**. You select the product and, if it is CVS based, enter the import path (if you have set a default CVS Import path in the Product Properties, it will be automatically proposed for you). After accepting the dialog, you will be presented with the Select

Which Columns dialog, and will get an Updated Strings list (actually, it has just new and modified strings; deleted strings and entire files will not be shown, but silently dropped from the Glossary.zip). The previous original value for modified strings will be shown in the QA results tab.

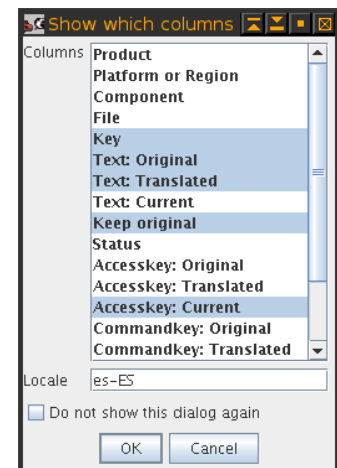
**Note:** if you are managing a CVS-based product, you need to pay attention to cvs diff logs when comparing your local copy and the CVS repository: MT will NOT delete removed files automatically, so you will have to do it by yourself, as well as remember to export files with removed strings.

Every string new or modified will be marked as “Fuzzy”. Fuzzy strings are those that need review by translator; this status is saved in the Glossary.zip, so you can start an update and quit MT if you have not enough time to finish the review in a single session. You can run MT again later and go to Edit | View Fuzzy query to get all remaining Fuzzy strings.

## *Editing strings*

Whether you are editing strings in a result list, like “View Fuzzy”, “Untranslated strings” or any other query, or browsing the products through Chrome View, you will see most data in the form of a table with several columns. Before accessing the view, you will be queried about which columns to show (unless you have opted for hiding the dialog, that can be restored in the General tab of Setup dialog).

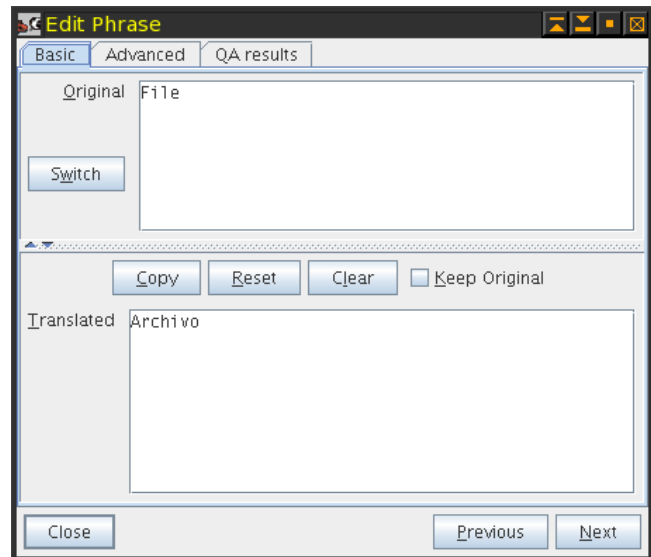
Which columns to show will vary depending of the query run and your personal taste, but you will surely want to have always visible the key/entity name, the original value, and the translated value. Keep Original and Fuzzy flags are likely to be included most times, too. Other values may or may not be useful, depending of circumstances. To select several columns, keep [Ctrl] pressed while clicking in the desired columns. Columns are described in the Reference Guide.



**Note:** besides selecting columns, this dialog allows you to select the locale. You positively MUST write the right locale code; leaving it empty or writing it with a typo will result in empty translations without you knowing the reason, and panic will obfuscate your mind. :-)

## *Editing phrases and images*

The table and Chrome views are useful in many scenarios, but are somehow limiting when the original string is too large to fit in the window, or when it includes several lines. However, you may activate an advanced view in the shape of a separate dialog, the so called “Edit Phrase dialog”.

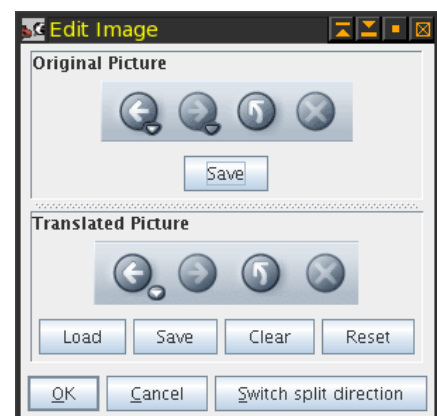


The Edit Phrase dialog has some features unavailable in the regular table view. For instance, if a string has a Localization Note (a note in the original en-US file with info for localizers), you only will be able to see it in this dialog, by pressing the Switch button in the Original text section (see the image).

As a result of having more space for each string than in a single table row, Edit Phrase dialog is more useful for long strings, for reviewing comments generated by QA results, and for getting detailed info through the Advanced tab. In fact, if you are a keyboard fan, you may find the Edit Phrase dialog as convenient as the table view to move through the list, thanks to the available keyboard shortcuts.

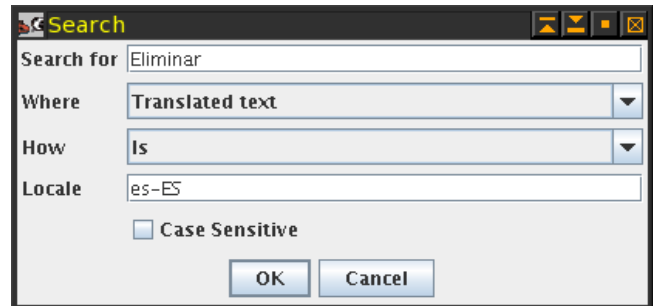
**Note:** the Edit Phrase dialog automatically sets off Fuzzy flag in every visited string (the only field not visible in this dialog). Should you need to restore this flag for a string after reviewing it in the Edit Phrase dialog, just return to the table view and either click on the Fuzzy flag or, if that column is not being shown, select the row and click the Fuzzy button.

Another fancy feature of MT 5.20 is the embedding of the Image Panel in the Chrome View. The Image Panel is used to see image files present in localizations (as part as built-in help, for instance), and to provide localized versions of those images that you may have already prepared with a graphic editor (MT doesn't feature an image editor, sorry). The image to the right shows the standalone image editor but, if you are browsing an image file in Chrome View, you will get the same content just where a table is usually shown.



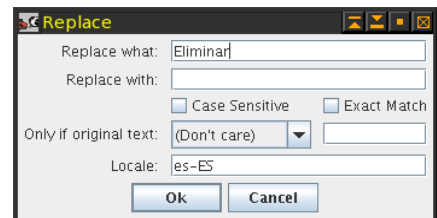
## ***Searches, auto translation, and queries, a lot of queries***

MT has a couple of search dialogs and a replace dialog. Both search dialogs allow to search for key names, original text, translated texts and user comments, and both allow to look for exact matches, partial matches and negations of those. The normal search dialog also allows to treat the search expressions as regular expressions;



on the other hand, the advanced search dialog allows to specify up to three different search criteria that can be added (AND) or alternated (OR).

The Replace dialog works in different way. You write what are you looking for **only in the translated strings**, what will be the replacement, and some other details (Exact Match means that the search string must be the whole content of a translation to replace it, it won't do it if the search string appears inside a bigger string).



There are also a bunch of queries. Most of them are used for Quality Assurance (QA) purposes; all can be accessed from the Edit menu, and all work pretty much in the same way: invoke the query, select which columns to be shown, and a window will open, which can be empty if no strings match the query.

The way MT understands a translation is that a string correctly translated is in one of these two cases:

- The original string needs a translation and it has been provided. Keep Original is not set, and the translated text is not empty.
- The original string is the same in en-US than in ab-CD. Keep Original is set and the translated text is empty.

Everything else will be detected in one of the QA queries as some kind of deviation (or, at least, warning).

## ***Labels, commandkeys and accesskeys***

As most moderns graphical programs, Mozilla allows access to most of its options by both mouse and keyboard. Accessing through the keyboard is done in two ways:

- keyboard shortcuts available through the whole program, or most of it. Usually they involve pressing [Ctrl] (or the equivalent Macintosh key) plus another key, and they are unique (the same combination always behaves in the same way inside the program). This kind of shortcuts are called “commandkeys”.
- Keyboard quick access keys available in menus and dialogs. They are represented as an underlined character of the UI label associated to the function. Sometimes they need to be invoked using [Alt] plus the underlined character. The same character is used in different dialogs, and sometimes even it appears several times in the same UI (although it is something to be avoided). These are the so called “accesskeys”.

The comandkeys need not to have their character in common with the function they perform. For instance, you use [Ctrl]+[X] to cut text to the clipboard, and yet the menu option is **Edit | Cut** and thus doesn't have an **X** in their label.

However, that's not the case with accesskeys. The **File | Open...** accesskey is O, but when you translate it into (for instance) Spanish, you have “Abrir...”, so if you let O being the accesskey, the menu option will be shown in the Mozilla UI as “Abrir... (O)”.

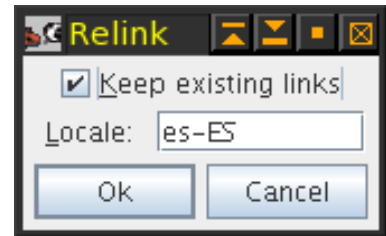
All of this means that there must exist a connection between UI labels and (at least) accesskeys, and that you need to care to adapt accesskeys to the label translation.

There are rules managing how to name strings that act as labels, accesskeys and commandkeys, mainly by adding suffixes for every of them. And, as every rule, they are sometimes not followed. :-) So MozillaTranslator 5.1 introduces some user preferences to let the localizer set a number of possible suffixes for labels (“labels” here includes every text that can have an associated accesskey; buttons, menu options, etc.), accesskeys and commandkeys. For the labels category, you can also tell MozillaTranslator to consider keys with no suffix, using “[:empty:]” as suffix.



Once you have set the possible suffixes to be taken into account, you can run **Edit | Check keybinding**. You will get in return a list of labels whose associated accesskey uses a character not being part of the label itself, allowing you to correct them.

As you can modify the suffixes anytime, wrong or missing associations may happen in MozillaTranslator database. To correct it, you'll need to run **Edit | Relink labels & keys**. You'll get the dialog on the right. Leave "Keep existing links" checked if you don't want to replace existing links, or uncheck it to perform a full relinking between labels and accesskeys & commandkeys.



## ***Exporting JAR, XPI and CVS***

If you are working with a JAR-based product, you may find useful the Export | JAR and Export | XPI options. Export JAR allows you to generate a JAR file with the same structure than the en-US original one, but with the ab-CD contents. Export XPI allows you to build a langpack XPI with the JAR files you select (if the product has several JARs defined, like Platform Neutral, Windows, Linux and Mac XPI, region JAR, etc.) and an install.js with the right instructions to install it in a XPFE host (namely, SeaMonkey).

If you are working with a CVS-based product, you can use Export | CVS Translation to get the same directory structure than the original en-US one, but with the ab-CD content.

**Note:** keep in mind that, for Mozilla CVS, the en-US directory structure is not really the same than the ab-CD CVS. There is still no workaround to this other than manually adjusting the directory structure.

## ***Migrating a product***

Let's suppose you have two very similar products, but with some differences. This was the case in the past with Mozilla Suite and Netscape 6.0/7.0. With the Advanced | Migrate Product option, you can have both products in your glossary, translate strings in one of them, and then migrate the translated strings to the other one, just where this latter one has them in the same path, file and key. Probably not as useful now as in the past, but still nice to have it.

## ***Working in group***

MT doesn't work in a connected way, but still provides some basic functionality for teams sharing the translation workload. All members should have the same starting glossary with the full product to translate, and if it is based on CVS, all they should try to keep it up to date.

With the previous starting premises, a coordinator may “assign” branches in the glossary to each member (branches can be at any level, just be sure to not assign any member a branch which contains inside a “sub-branch” assigned to other one. Then, after translating the assigned section, and by using Export | Partial glossary and Import | Partial glossary, sections of the glossary can be handed back to the coordinator to merge them back.

Sometimes the translation contains really huge files (built-in help files are a nice example); in this case, a similar procedure can be followed with individual files (Export | File and Import | File).

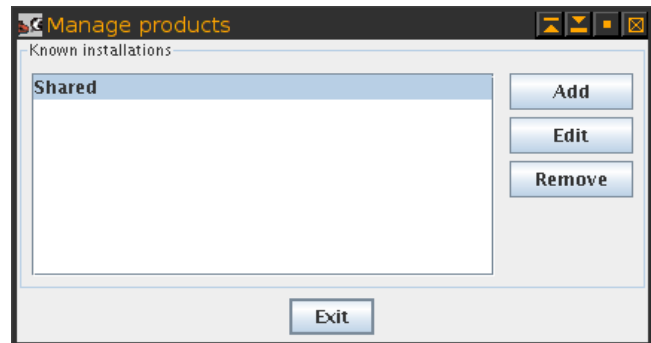
# Menu Reference Guide

## *File Menu*

### Manage Products

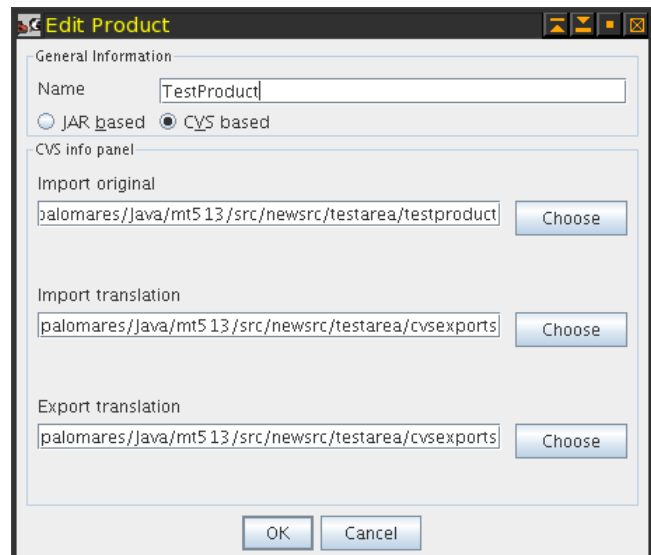
Used to create and remove products, and to modify their properties.

- To add a product to the glossary, click the Add button. You will get a dialog to enter the product properties (name, type, source...).
- To modify the product properties (not the product data to be translated), select a product in the list and click the Edit button. The Edit Product dialog will be shown.
- To remove a product, along with all of its data (both original and translated strings) and properties, select a product in the list and click the Remove button. You will be asked for confirmation.



The Edit Product Dialog has these options:

- Name: a short name for the product. It is used just inside MT for your own reference.
- JAR based / CVS based: select JAR based if the original en-US strings are packed in a JAR file, CVS if they are laid out in a regular directory structure (which may or may not have been retrieved through a CVS checkout; it could even be the expanded content of a JAR file).



### ***CVS info panel***

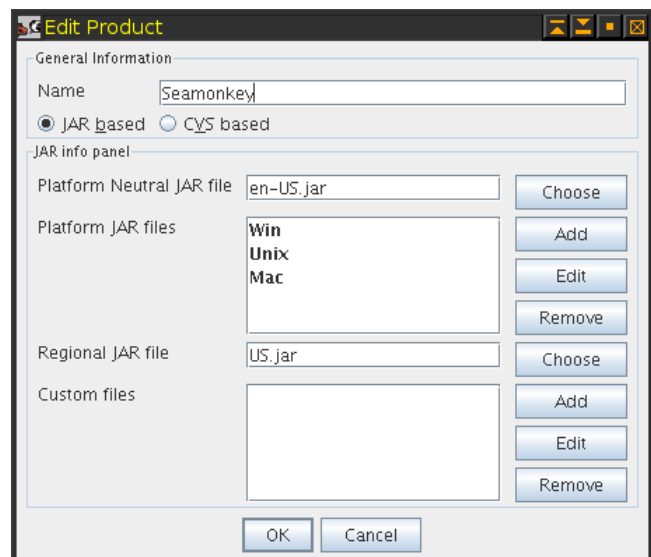
If you select CVS based, the following data will be presented (unlike JAR based, this info is not needed to work, but still you will want to fill it or else you will need to fill the same data across different MT screens):

- Import original: the base path where original en-US files live.
- Import translation: the base path where translated ab-CD files live, maybe from previous works.
- Export translation: the base path where to put translated ab-CD files when running Export | CVS Translation. It is likely that you want this and the previous path to be the same.

### ***JAR info panel***

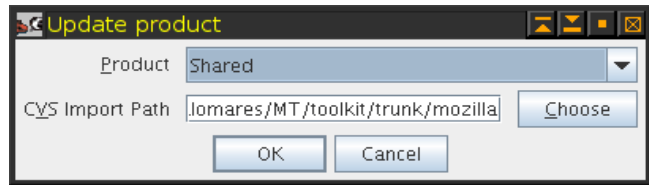
If you have set the product to be JAR based, other options will be shown:

- Platform Neutral JAR file: the file with platform independent (i.e.: the same regardless of it running on Windows, Unix or Mac) locale files. You will always use this locale.
- Platform JAR files: Mozilla Suite, SeaMonkey and maybe other products define platform-dependent JAR files with strings specific to the underlying OS.
- Regional JAR file: some localizable content that may vary depending between regions, even if all regions use the same language. When packed into a XPI this is called the content/region pack.
- Custom files: unfortunately, this option doesn't do anything useful. When it get fixed, you will be able to add files not present in the original JAR files and export them. Each custom file will ask you for three data:
  - Name: name that will be shown in the Chrome View tree and in the File column in the table views.
  - Original file: path in your file system to the file to be inserted.
  - Mount point: path inside of the exported XPI or JAR.



## Update Products

This option presents a dialog in which you must select a product to be rescan for changes (new files and strings, modified strings, and deleted files and strings). If the product is JAR based, it will look for JAR files defined in the product properties; if the product is CVS based, the CVS import path must be entered in the appropriate field, but it will be automatically filled with the data from the product properties.



After rescanning the product, you will be asked to choose the columns to be presented in the results table. For more info, see “Choosing columns” in the Edit menu.

## Save Glossary

All data managed by MT during its execution is loaded in memory. You may want to save the glossary once in a while during long sessions, to minimize risk of data loss in case of power outage, program or OS hangs, etc.

## Save Settings

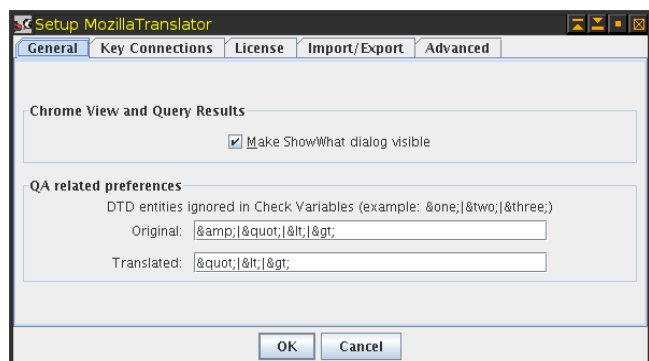
In a similar way to the previous one, you can save MT preferences selecting this option to avoid risk of data loss.

## Setup

This option allows you to set several MT preferences. Many of them should be reviewed and adjusted to get the most of MT. The Setup dialog has these tabs and options:

### **General Tab**

- Make ShowWhat dialog visible: check to get the “Select which columns” dialog every time a table is to be presented. Uncheck if you are happy with your last column set selection.
- Original DTD entities ignored in Check Variables: “Check Variables” is a QA (Quality Assurance) query that looks for strings that have different entities in original DTD content than in translated ones, as this could mean an error in translation. However, sometimes you will want MT to ignore

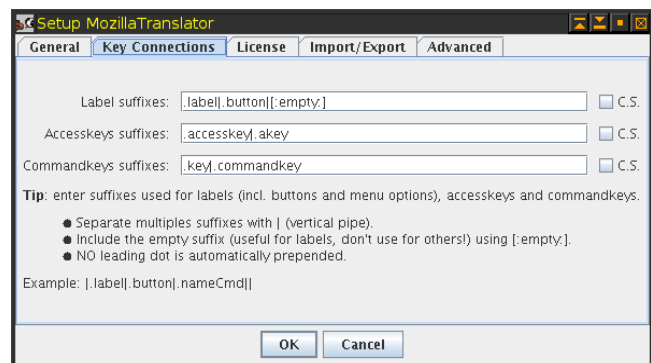


certain entities, like & in en-US. In that case, enter the entities to be ignored in this field separated with “|”.

- Translated DTD entities ignored in Check Variables: complementing the previous one, you can enter here DTD entities to be ignored for translated content.

### Key Connection Tab

Here you can define suffixes for labels, accesskeys and commandkeys. Separate suffixes using “|” (pipe). As most moderns graphical programs, Mozilla allows access to most of its options by both mouse and keyboard. Accessing through the keyboard is done in two ways:



- Keyboard shortcuts available through the whole program, or most of it. Usually they involve pressing [Ctrl] (or the equivalent Macintosh key) plus another key, and they are unique (the same combination always behaves in the same way inside the program). This kind of shortcuts are called “commandkeys”.
- Keyboard quick access keys available in menus and dialogs. They are represented as an underlined character of the UI label associated to the function. Sometimes they need to be invoked using [Alt] plus the underlined character. The same character is used in different dialogs, and sometimes even it appears several times in the same UI (although it is something to be avoided). These are the so called “accesskeys”.

The comandkeys need not to have their character in common with the function they perform. For instance, you use [Ctrl]+[X] to cut text to the clipboard, and yet the menu option is **Edit | Cut** and thus doesn't have an X in their label.

However, that's not the case with accesskeys. The **File | Open...** accesskey is O, but when you translate it into (for instance) Spanish, you have “Abrir...”, so if you keep O as the accesskey, the menu option will be shown in the Mozilla UI as “Abrir... (O)”.

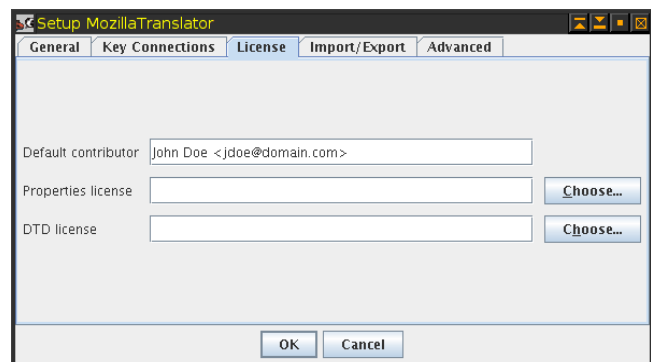
All of this means that there a connection must exist between UI labels and (at least) accesskeys, and that you need to care to adapt accesskeys to the label translation.

There are rules managing how to name strings that act as labels, accesskeys and commandkeys, mainly by adding suffixes for every of them. And, as every rule, they are sometimes not followed. :-) So MT 5.1 introduced some user preferences to let the localizer set a number of possible suffixes for labels (“labels” here includes every text that can have an associated accesskey; buttons, menu options, etc.), accesskeys and commandkeys. For the labels category, you can also tell MT to consider keys with no suffix, using “[:empty:]” as suffix.

### ***License Tab***

In this tab you can supply values for these options:

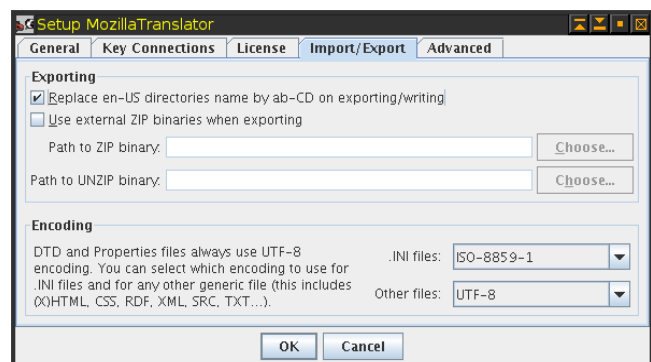
- Default contributor: here you can write the localizer credit to be inserted in license files under the “Contributors” section of the license. Keep in mind that MT is not so smart to preserve previous license in the translated file; it will just grab the en-US license and append the value in the translated file at export time.
- Properties license: in selected cases (NOT the official mozilla.org repositories), you may want to supply a standard license snippet for translated files. In this field you can give the path to a text file containing a license to be prefixed to every exported file.
- DTD license: the same than above field, but for DTD files.



### ***Import/export Tab***

This tab gathers some options useful for import and export functions.

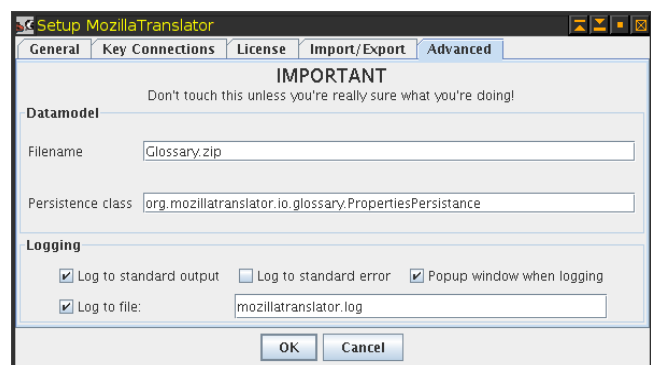
- Replace en-US directories name with ab-CD on exporting/writing: this is done automatically for JAR files, but you may want to do the same for Export | CVS translation.
- Use external ZIP binaries when exporting: on Unix/Linux, Java built-in ZIP/JAR management classes fail to provide the right permissions in the files added to the archive. This can be solved by just uncompressing and re-compressing again the JAR/XPI files invoking the standard InfoZIP binaries, which are available in most Linux distributions. This is not needed in Windows at all.



- Path to ZIP binary: if you flag the previous field, you should supply the path to the ZIP binary.
- Path to UNZIP binary: path to the UNZIP binary in case you selected the Use external ZIP binaries when exporting.
- INI files encoding: some old INI files in the mozilla.org CVS use an encoding other than UTF-8. You can select here which encoding to use for INI files.
- Other files: select the encoding to use for text files other than DTD, Properties and INI files.

### ***Advanced Tab***

The last tab is about the data model and logging. Filename specifies the name of the file where all data is stored (original, translated strings and meta data). The persistence class allows you to use different methods to load and save the data.



These settings are meant for developers. Specifying a different Java class will cause a different routine will be used for loading and saving of the glossary. Future extensions in this direction could allow e.g. to save in a database instead of a file.

The logging settings have currently no effect, since the logging part of the application is in a bit of a flux. It has been re-factored since this dialog was made, but the process is not complete.

### **Quit**

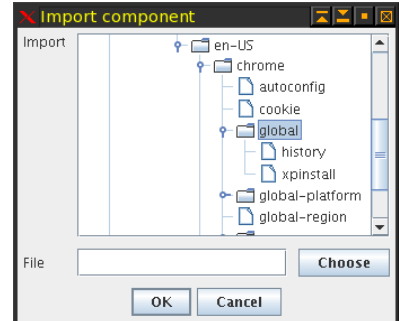
This option exits MT. Before shutting down the program, you will be asked to save the glossary and settings.



## Import menu

### Import Partial Glossary

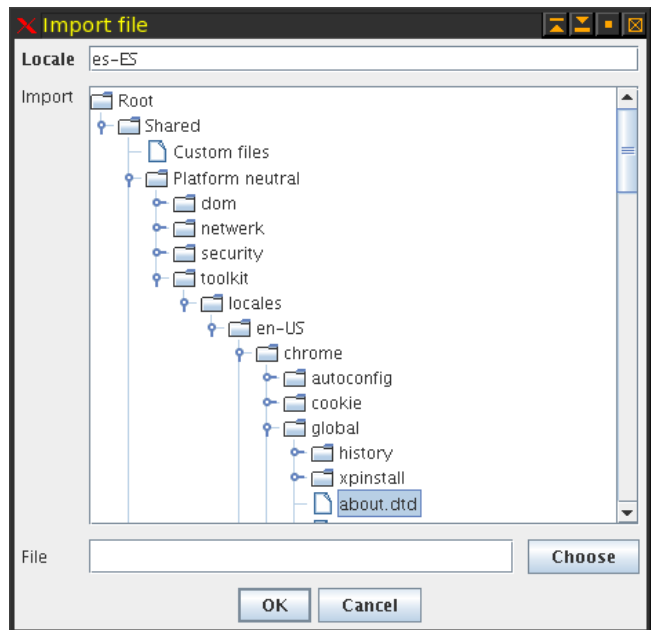
This option allows you to import a previously saved partial glossary and merge it into the main glossary. You will have to choose a component in the import tree and the file containing the partial glossary. And, differently to MT 5.0x and previous versions, you don't need to specify a leaf node. In the image, the "global" node, which has "history" and "xpininstall" under it, can be selected. The partial glossary is expected to have the same structure than the one you select in the dialog. This option is useful for collaborative work.



### Import File

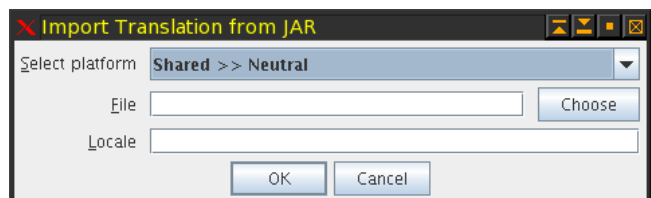
Sometimes, you want to just import a single file instead of a bunch of them. Import file allows you to do this. The dialog structure is the same than for importing partial glossaries, except that in this case you must choose a leaf node in the tree, one belonging to a file, and that you need to specify the locale to export.

In the image, the file "about.dtd" has been selected. Note that, in the previous image from Import partial glossary, the "autoconfig" and "cookie" nodes were leaf nodes, while in this image they are folders (since they are components, not files).



### Import Translation from JAR

If you are working with a JAR-based product, you may import the content of a previous translation in the form of JAR files, like the one shipped as actual translations. So, if you have no access to the Glossary.zip file for a translation but have access to the resulting JAR files, you can use these to avoid having to restart from scratch. In this case, select the product and

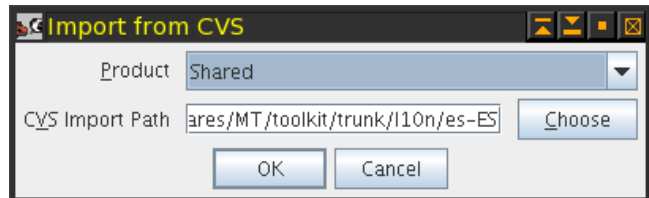


platform from the drop down list, the JAR file (ab-CD.jar, ab-win.jar, CD.jar, etc.), and the right locale code in which import the translation.

**Note:** keep in mind that the meta data (Keep Original, Fuzzy, comments, etc.) cannot be retrieved from the JAR files.

## Import Translation from CVS

On the other side, if you are working with a CVS-based product, you may find yourself in a similar situation, except that you will have an outdated CVS repository (outdated because nobody has brought the content in pair with the en-US, not because the CVS software is obsolete itself). The CVS import dialog lets you select the CVS-based product in which to import, and the CVS import path (like always, if you have set the CVS import path in the product properties, you will have this pre-filled).



**Note:** keep in mind that, like in the JAR case, the meta data (Keep Original, Fuzzy, comments, etc.) cannot be retrieved from the raw files in CVS.

## *Export menu*

### Export Partial Glossary

This option is the reverse of Import partial glossary. It lets you to select a component and export it to a file that can be later imported. Also like in Import partial glossary, and also differently to MT 5.0x and previous versions, you don't need to specify a leaf node.

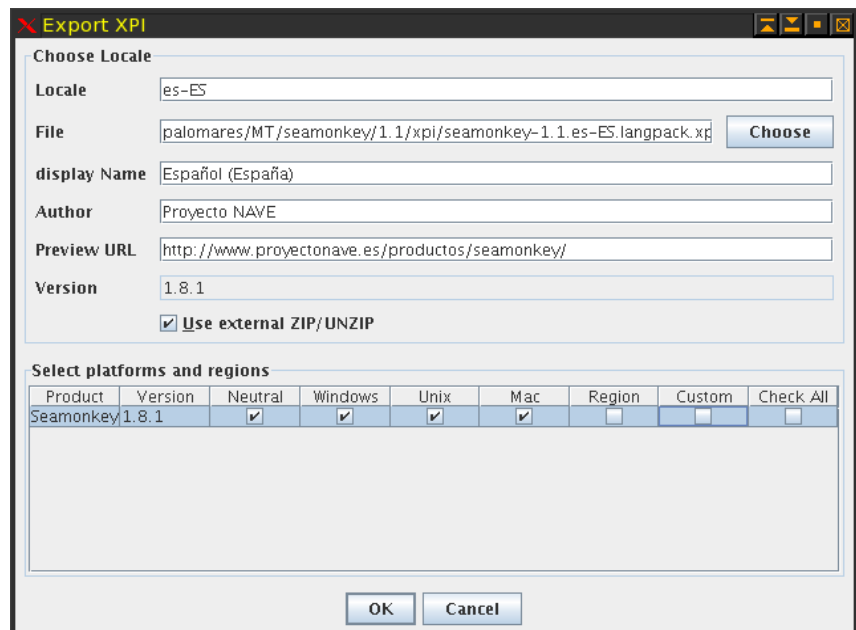
### Export File

This option is the reverse of Import files. You must choose the locale to export and a file in the tree, and write or select a path and filename where to export.

## Create XPI File

This option creates an installable language pack for XPFE-based products (i.e., SeaMonkey  $\leq$  1.1). It is not useful for Firefox, Thunderbird and, in general, XUL/Toolkit based products. These are the fields:

- **Locale:** the locale to be exported.
- **File:** the path and file name where to save the XPI.
- **Display Name:** the string that will appear in the langpack/extension description.
- **Author:** the author name. You can use a team name if you want, since it is just a descriptive field.
- **Preview URL:** this actually doesn't do anything useful. It is a descriptive field in install.js files.
- **Version:** this field is disabled for edition. It will have its value taken from the selected product in the table "Select platforms and regions" below.
- **Use external ZIP/UNZIP:** check this if you have configured ZIP/UNZIP paths in MT preferences, to workaround permissions problem in Unix/Linux systems.
- **Select platforms and regions table:** for every product created in the system, a row will be presented in the table in the dialog. You can check any cell you want to be included in the XPI, but keep in mind that MT won't let you select check boxes from two products having different versions. Checking/unchecking the "Check All" column checks/unchecks all the cells in the same row, as a quick way to choose a whole product.



### ***Localizing the XPI installation messages***

The resulting XPI will use a install.js provided by Robert Kaiser which allows the user to install the langpack global or locally (in the user profile). The messages presented to the user during installation are located in a file named install.properties put in the root of the XPI archive (which is actually a ZIP-based archive). If you want to provide translated messages, follow these steps:

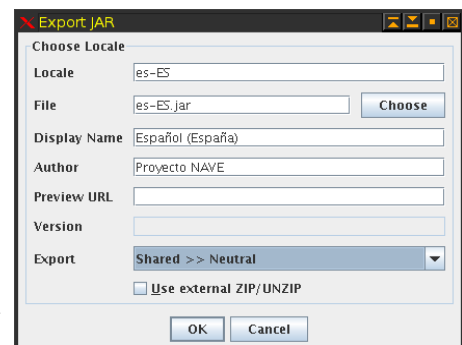
1. Open the mt520.jar with a ZIP extracting/browsing utility.
2. Locate the file org/mozillatranslator/resources/install.properties.
3. Extract that file to the same directory where Glossary.zip is.
4. Translate it with an UTF-8 editor (you can use MT for this if you want, but it may be too much hassle).

If you don't provide the translated file, the en-US version will be used.

## Create JAR File

This option creates JAR files with translated locale files. You will have to provide these values:

- **Locale:** write the locale ab-CD code for your language.
- **File:** write or select the filename where to save the JAR file.
- **Display Name:** the description of the JAR file content.
- **Author:** the author of the translation. It is just a descriptive field.
- **Preview URL:** not used in practice. Again, it is just a descriptive field.
- **Version:** this field is disabled; its value will be taken from the platform taken in the Export field.
- **Export:** a drop down list with every product and platform defined in the Glossary.zip.
- **Use external ZIP/UNZIP:** check this if you have configured ZIP/UNZIP paths in MT preferences, to workaroud permissions problem in Unix/Linux systems.



## Export in XML Format

This sub-menu contains options to export parts of the translation as XML files. These files are not intended to exchange data with other MT users, but to obtain that data in a format easily manageable.

### *...File*

In this option you will choose a file in the tree, specify a locale code and provide a filename. The dialog is very much the same than the regular export file one.

**Note:** keep in mind that content of binary files will not be exported. If you choose a binary file, the XML you will get will only contain the meta data and general information of the file.

**...Component**

In this option you will choose a component in the tree and provide a filename. Again, the dialog is similar to the regular export glossary one.

**...Glossary**

In this option you will have to provide just the filename where to save glossary in XML format.

**Export CVS Translation**

This option lets you to export a CVS-based product reflecting the directory structure. If you have set the “Replace en-US directories name by ab-CD on exporting/writing”, the directories named “en-US” will be renamed to your locale during export. Sadly, this won't be enough to convert the export to the right structure for committing it to L10n CVS, as the directory layout is completely different. We hope to solve this in the future.

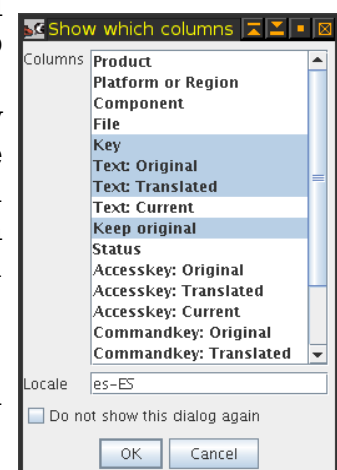
**Edit Menu****Chrome View**

Chrome View is the most complex and complete view in MT. It lets you browse every product, component and file in the Glossary.zip. It is more useful when you are doing the first translation of a product (ie., you are not reusing a previous translation), and for getting a view of a full file, instead of seeing only new or modified strings of it.

**The Show What dialog**

As with every view of the data, first you will be presented with the Show What dialog. In this dialog, you will have to choose which columns you want to be in the table view. Select the columns you want to be shown by [Control]+clicking each name, and insert the locale code under the selection list. If you are pretty sure you will always want to have the same column set shown, you can check “Do not show this dialog again” (it can be restored through MT setup dialog, in case you need it).

Consider each file, and each string inside, in the internal database is placed under a well defined hierarchy:

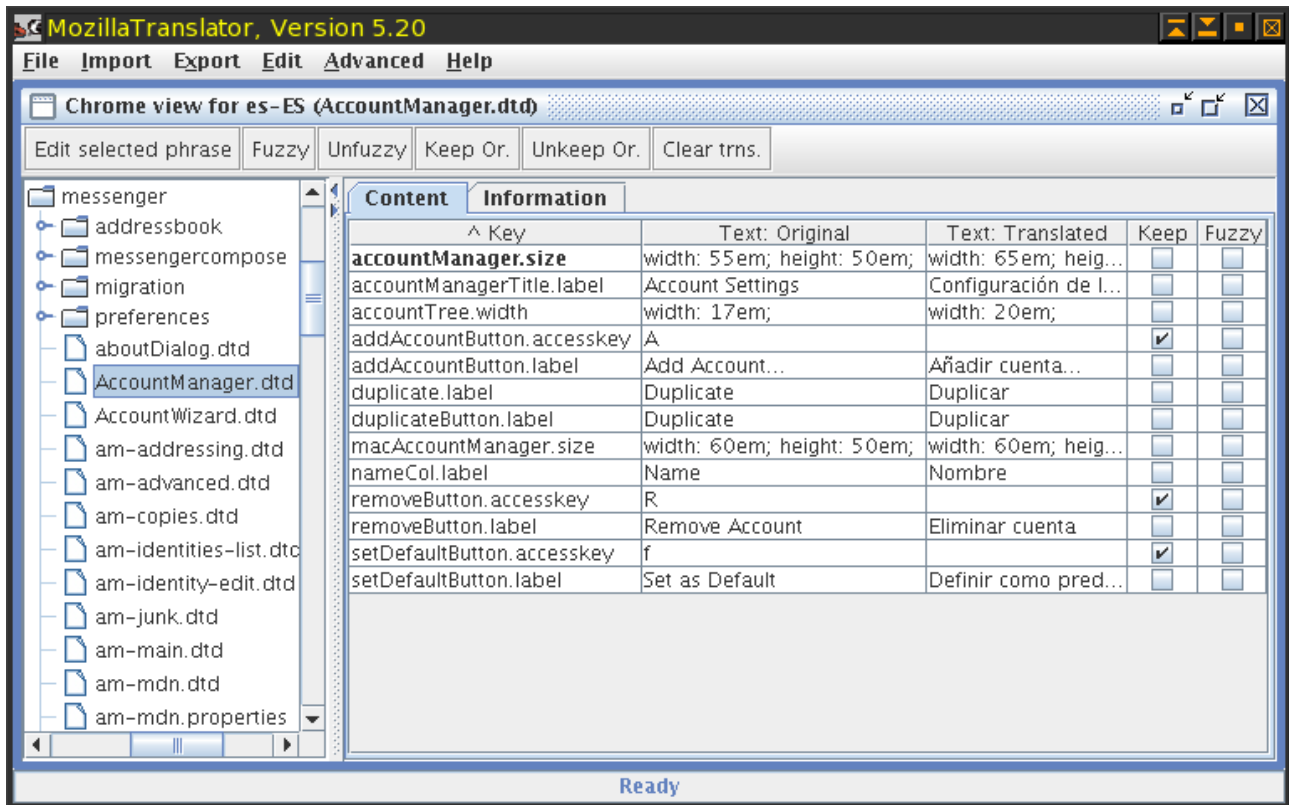


**/ Product / [Platform | Region | Custom] / Component(0..n) / File / Key**

The previous hierarchy means that, under a Product, you'll find either a platform (including "Platform neutral"), a Region or a Custom container. Under each of these, you'll find a number of successive components, starting at 0 (no component; that's the case for custom containers, and it may happen too in some CVS mode products, depending of what you define as the base directory). Under that, you'll find several files with keys inside them. Each key element belongs to a single string and has several properties:

Column name	Description
Key	The name referenced by the application for this string. If it shows in <b>boldface</b> , then the key has a localization note associated to it (you will be able to see it through the Edit Phrase dialog).
Text: Original	The original string itself to be not localized (probably in English).
Accesskey: Original	The keyboard shortcut for a menu item or an UI widget currently shown in the open window (Alt/Apple+letter). This is the letter of the Text: Original string will be underlined. (a.k.a. accelerator key).
Commandkey: Original	The application wide keyboard shortcut for the function indicated by Text: Original (Ctrl+letter).
Text: Translated	Same as for the three 'Original' counterpart, this time the fields can be edited, entering the localized version for the currently selected locale.
Accesskey: Translated	
Commandkey: Translated	
Text: Current	These fields don't really exist in the database. They just show what the program would export for the current locale; e.g., when the Text: Translated field is empty the program will export the Original content.
Accesskey: Current	
Commandkey: Current	
Keep Original	This check mark box, when flagged, disables the 'Translated' fields, and take the current values from the 'Original' fields.
Status	This is mostly a useless field.
Comment	A text field to enter relevant comments. The comments are only saved if an actual translation exists (ie. marking a key as Keep Original does not allow to save a comment for that key).
Fuzzy	This field marks <i>non-reviewed</i> strings.
Result Comment	After running most QA queries, some strings can have a "result comment" attached to them to better explain why they have been selected in the query.

**The Chrome View Window**



The above image shows a typical Chrome View. It has the following areas:

**The tool bar**



The tool bar allows you to perform some operations with the string or strings selected in the view. The function of each button is the following:

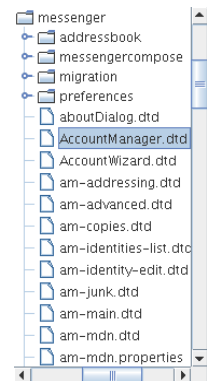
- Edit selected phrase: launches the Edit Phrase dialog, which presents a more complete view of the string and its status. From that dialog you can go back and forward through the file strings.
- Edit image file: this button is not present in Chrome View, but it does in other table views. It shows the Edit image file when the single string inside image files is selected and works exactly the same than Content tab when an image file is selected in the tree.
- Copy to all: this button is not present in Chrome View, either, but it does in Redundant Strings query. It allows to set every row with the same original with the same translation than the one in the string selected.
- Fuzzy: activates the Fuzzy flag in the selected phrase(s). It is specially useful if you want to mark as Fuzzy a bunch of strings; just select the

desired strings (usual [Shift] and [Ctrl] key combinations apply for selecting a consecutive / non-consecutive group) and press the button.

- Unfuzzy: deactivates the Fuzzy flag in the selected phrase(s).
- Keep Or.: sets the Keep Original flag in the selected phrase(s).
- Unkeep Or.: unsets the Keep Original flag in the selected phrase(s).
- Clear trns.: clear the translation in the selected phrase(s). Be careful, there is no Undo action for this!!

**The tree**

The tree in the left lets you navigate through every product, component and file present in the Glossary.zip. When you click in a file, the right side will show its contents; when you click in a component or product, no content will be shown, but it still can be useful to obtain some info of it.



**The Content tab in non-image files**

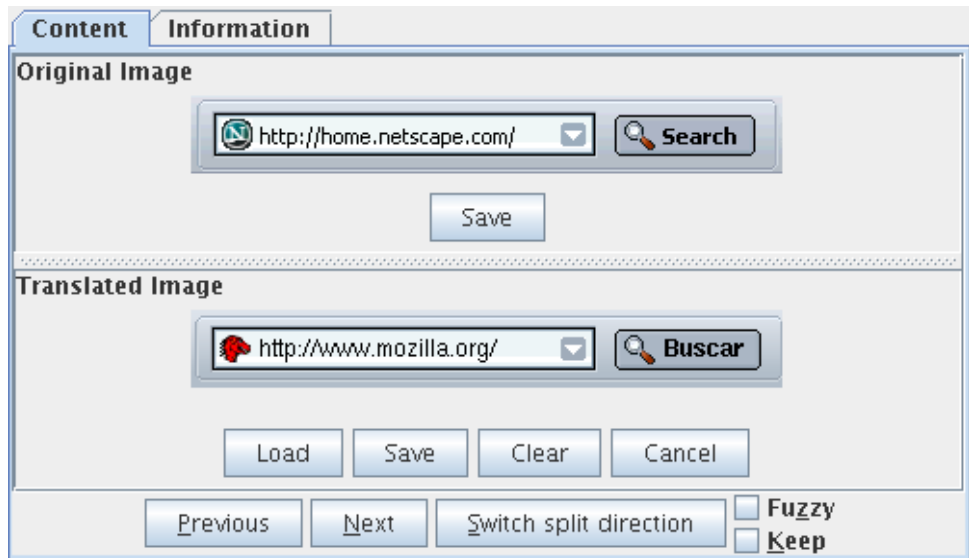
Last, but not least, the right side shows you two tabs: Content and Information. The Content tab shows the table view (except if the file is an image, see below) with every selected column. In the image, note that the first entity key name is in bold, because it has a localization note attached to it. To see the localization note, you have to select the string and go to the Edit Phrase dialog.

Content		Information			
^ Key	Text: Original	Text: Translated	Keep	Fuzzy	
<b>accountManager.size</b>	width: 55em; height: 50em;	width: 65em; heig...	<input type="checkbox"/>	<input type="checkbox"/>	
accountManagerTitle.label	Account Settings	Configuración de l...	<input type="checkbox"/>	<input type="checkbox"/>	
accountTree.width	width: 17em;	width: 20em;	<input type="checkbox"/>	<input type="checkbox"/>	
addAccountButton.accesskey	A		<input checked="" type="checkbox"/>	<input type="checkbox"/>	
addAccountButton.label	Add Account...	Añadir cuenta...	<input type="checkbox"/>	<input type="checkbox"/>	
duplicate.label	Duplicate	Duplicar	<input type="checkbox"/>	<input type="checkbox"/>	
duplicateButton.label	Duplicate	Duplicar	<input type="checkbox"/>	<input type="checkbox"/>	
macAccountManager.size	width: 60em; height: 50em;	width: 60em; heig...	<input type="checkbox"/>	<input type="checkbox"/>	
nameCol.label	Name	Nombre	<input type="checkbox"/>	<input type="checkbox"/>	
removeButton.accesskey	R		<input checked="" type="checkbox"/>	<input type="checkbox"/>	
removeButton.label	Remove Account	Eliminar cuenta	<input type="checkbox"/>	<input type="checkbox"/>	
setDefaultButton.accesskey	f		<input checked="" type="checkbox"/>	<input type="checkbox"/>	
setDefaultButton.label	Set as Default	Definir como pred...	<input type="checkbox"/>	<input type="checkbox"/>	



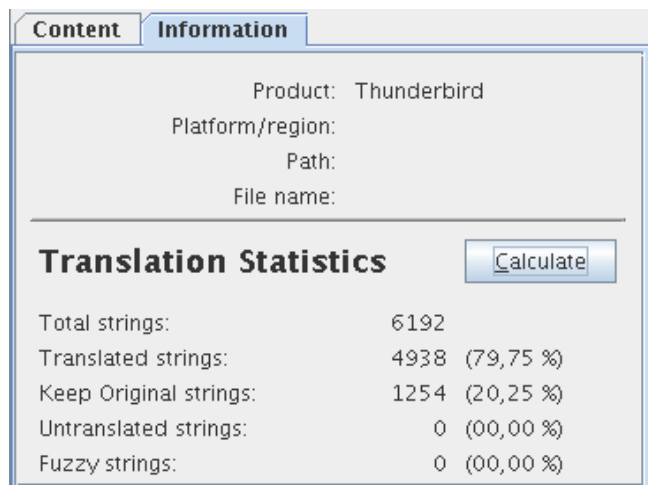
**The Content tab in image files**

If you are viewing an image file, the Content tab changes to this view. The upper section shows the original (en-US) image, which you can save if you want to use it as starting point for a localized version of it. The bottom section shows the localized image, if any. You can load, save or clear the translated image. You can also cancel the last action done on the translated image. Besides that, you can set/unset the Fuzzy and Keep flags, and move back and forward to the next file. Lastly, as some images are tall and others wide, you can switch the split direction.



**The Information tab**

The Information tab shows general information about the selected node in the left tree. It also lets you get some statistics information by pressing the "Calculate" button. The interesting thing about the statistics is that you can get them on any node (except the Root node).



**QA Queries**

This menu contains a number of queries aimed to QA (Quality Assurance). They all work in the same way: you choose the option, select which columns should be shown, and you get a table view window with the matching strings.

**Untranslated Strings**

All strings should be translated. Those not requiring translation should have "Keep Original" flag set. This way, running this query will report you with the remaining strings to translate.

### ***Check Keep Original with trns.***

This query reports all strings with Keep original flag set having a translation. As the Keep original flag prevails over any translation, all the listed strings should have an empty translation, or otherwise you may want to revise it (either no translation is needed, or Keep original flag should be removed).

### ***View Original == Translated***

Unless you are maintaining two or more different translations at once for the same product, you should use the Keep original flag to mark strings not requiring translation, and thus no strings should have a translation that equals to the original string.

Why can't you use Keep original if you maintain two or more translations? Because Keep original is bound to the phrase, not to the translation, so you can't say, for instance, that "No" translates to "Nein" in German, and at the same time "keep it original" for the Spanish translation (which is "No").

### ***Check Variables***

Some strings in properties files include *variables*, in the form %S or %n\$S. At runtime, the Mozilla product substitutes these variables by actual values (for instance: "%S files saved" could print as "3 files saved" at runtime). %n\$S, where n is a number between 1-9, allows the translator to alter the substitution order (for instance: "%1\$S messages were found across %2\$S folders" could be translated as "A lo largo de %2\$S carpetas (folders) se han encontrado %1\$S mensajes (messages)", and yet the number of messages and folders would be printed in the right position).

DTD files are checked, too. If a original string contains some &entities; the translated string will be checked to have the same entities, too. As sometimes you may need to use entities in the translation not present in the original string and vice versa, you can provide MT with a list of exceptions in the General tab of MT setup.

The Check Variables query searches for original strings with variables and compares if their associated translations have the same variables, returning a list of strings with problems.

### ***Check Key binding***

This query gives you a list of strings with problems in their associated accesskeys. More information about this query is available at Labels, commandkeys and accesskeys section in the User Guide.

### ***View DONT\_TRANSLATE not honored***

Localization notes in DTD and Properties files are written by developers to help localizers to do their job. There is a well defined syntax in localization notes for developers to warn localizers about not translating some strings, or part of them. The localization note must have the string "DONT\_TRANSLATE" in it to flag this circumstance. This query looks for strings with localization notes containing "DONT\_TRANSLATE" and yet having a translation. Keep in mind that this query has uncovered several strings flagged as DONT\_TRANSLATE when they really deserve a translation (at least, in Spanish), so take the results of this query with a grain of salt.

### ***All above at once***

This query runs all the previous tests at once, giving you the accumulated result. The power of this test comes from the "Result comment" column or the QA Results tab in Edit Phrase Dialog, because every previous test adds useful info in that column/tab, so you can discover and fix in a single query most typical QA problems. The info is cleared for every query run in Edit (even View Binary and View Fuzzy) except Chrome View, and is not saved in the Glossary.zip file.

### ***Redundant Strings***

This query gives you a list of all original strings that appear more than once in the glossary. It allows you to manually search for different translations for two equal original strings. However, if you need to do this, you'll find more useful the Search for translation inconsistency (explained below).

### ***Search Translation Inconsistency***

This query creates a list with strings that match all these criteria:

- The original string appears more than once.
- At least one occurrence of them has been translated in a different way than the others.

Different translations may happen because of these reasons:

- The different contexts surrounding the original strings do it necessary.
- Some of the strings appear in dialogs with size constraints, so some translations need to be abbreviated or otherwise shortened.
- The different translations happened in different moments or by different people. All translations are correct, but it may be weird having the same original string translated in different ways.

For this latter reason, you may want to use this query. Once you get the list, you can sort it by Text: Original to see how the same en-US string has been translated in different ways. If you have such a case and change one translation, all strings with that same translation get affected. For instance:

#	<i>en-US</i>	<i>ab-CD</i>
1	Browse the web	Examinar la web
2	Browse the web	Examinar la web
3	Browse the web	Navegar por la web
4	Browse the web	Examinar la web
5	Browse the web	Surfear la web

If you edit the first translated string and set it to "Navegar por la web", strings 2 and 4 will also change their translation to "Navegar por la web", while string 5 will keep as "Surfear la web".

### ***Search similar strings (experimental)***

This query uses the Soundex indexing algorithm (available at <http://www.archives.gov/genealogy/census/soundex.html>) to find original strings with similar sounds and lists them.

### **Relink Labels & Keys**

This option walks through the entire database redoing links between labels, commandkeys and accesskeys. For more information, see "Labels, commandkeys and accesskeys" in the User Guide.

### **Clear Fuzzy Flag**

When you update a product (by running either **File | Update Product** for JAR mode or **Edit | CVS Import directory** for CVS mode), new and modified strings get their Fuzzy flag set. When you edit these strings using the Edit Phrase dialog the Fuzzy mark is removed, and you can do it so manually in the Chrome View. This means that all strings with Fuzzy flag are pending or need a review.

However, if by any reason a lot of your strings have the Fuzzy flag and you still feel that they are correct and need no review, you can run this option and **ALL** strings will get their Fuzzy flag removed. You will be asked before proceeding, just in case you mistakenly choose this option.

## View Fuzzy

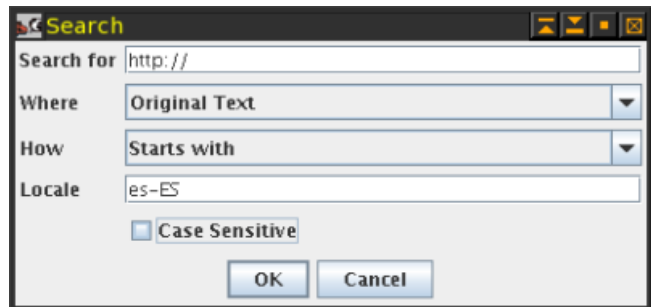
Surprisingly, this query gives you a list with all strings having their Fuzzy flag set. This may be useful when used along with Autotranslate feature (see below).

## View Binary

This gives you a list with all binary (ie.: images) strings.

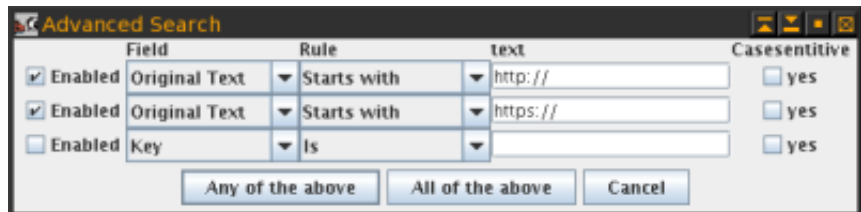
## Search

This option lets you input the string you're about to search, in which field look for, with which kind of match, the locale (relevant only if you're searching in the Translated text or the Comment field), and if it should care about the characters case. You will get a list with the matching strings, allowing you to edit translations in the same way as Chrome View.



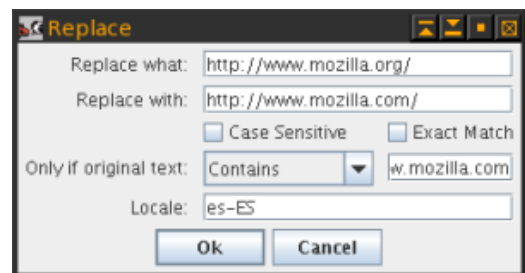
## Advanced Search

This option presents a less verbose dialog of the normal Search one, but allowing you specify up to three criteria that may be treated as compound (AND) or alternative (OR) to match strings. Besides that, it behaves in the same way that regular search dialog.



## Replace

This option allows you to do a replace in the translation. Exact match forces the “Replace what” string to be the whole content of the string, instead of being just a part of it. You may also add a condition based on the original text contents. You'll get a list with the replaced strings.



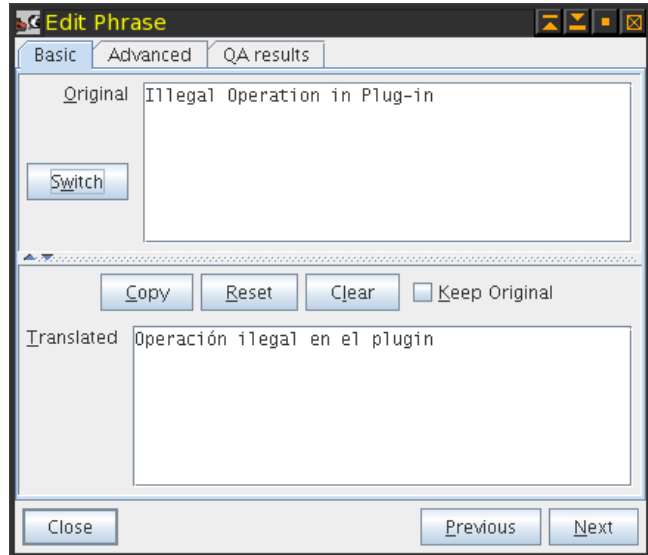
## Edit Selected Phrase

This option does the same than pressing the button “Edit Selected Phrase” in the tool bar of Chrome View and query results. The Edit Phrase dialog is shown, which has the following elements:

### Basic Tab

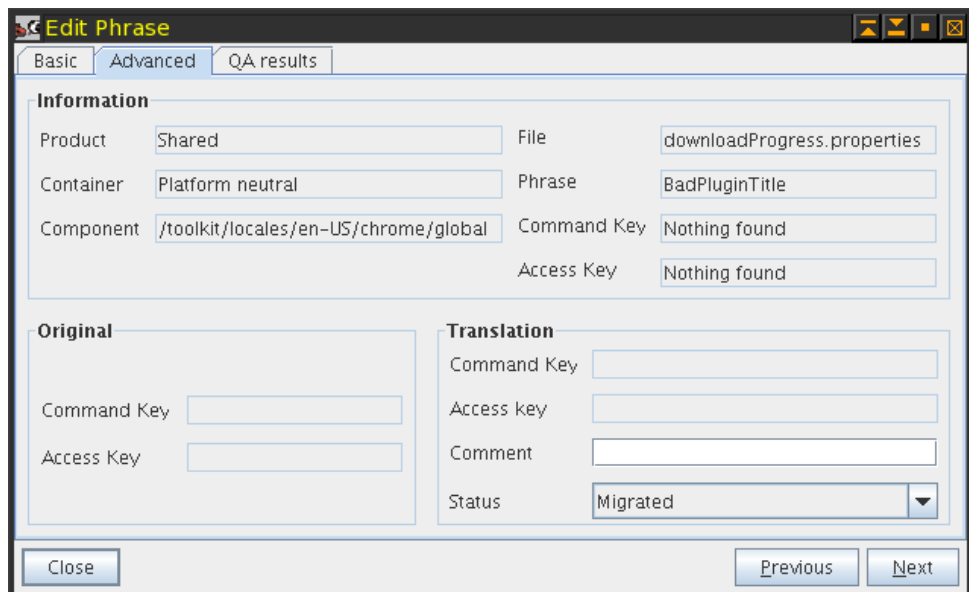
This tab contains the most usual elements while translating, which are:

- Original: this field shows the en-US string value. If there is a localization note, changes to its content when the “Switch” button is pressed.
- Translated: here is where you can write or edit your translation.
- Copy: pressing this button copies the original value to the Translated field.
- Reset: pressing this button reverts to the value “Translated” field had before entering in the string being edited.
- Clear: pressing this button empties the translation.
- Keep Original: checking this will set the Keep Original flag.



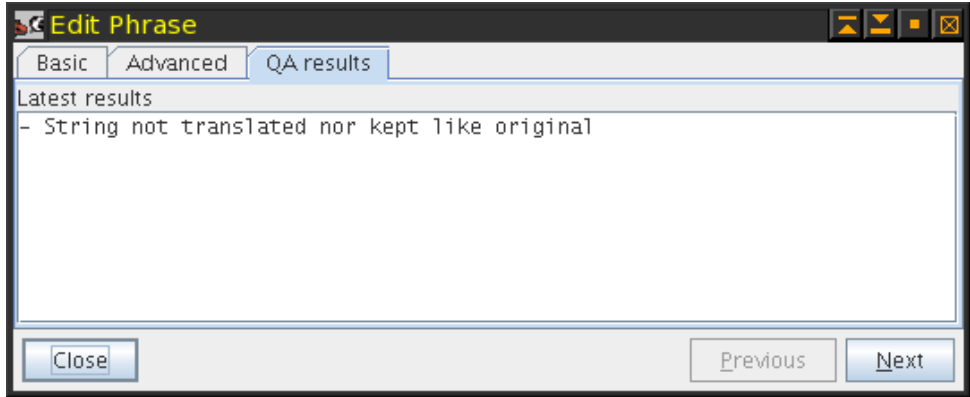
### Advanced Tab

This tab has mostly reference information about the string: product, components and file where it belongs, name of the entity/key, and so. If the string has an associated commandkey and/or accesskey, you will be able to set it here. You can also add a comment to the translation. The Status field is not really useful as of today.



### QA results Tab

The QA results tab is useful after running a QA query or updating a product. In the first case it will have descriptive information about the reasons why a string has been selected in the



query. In the second case (when updating), it will save the previous value for original strings that have changed.

### Auto-Translate

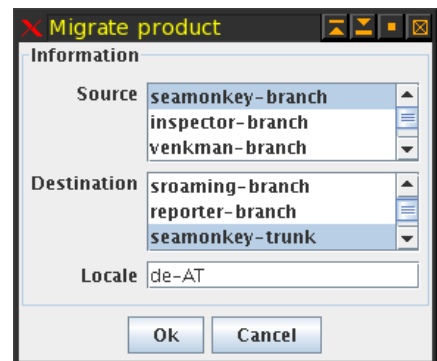
This feature will look for untranslated strings, will take the original string of each one and look for another occurrence of the same string, using the translation of this latter one to fill the first. Beware, however, that in case the same original string has been translated in different ways, no special treatment will take place; the first translation found will be used to auto-translate the rest.

This feature **DOES NOT** remove the Fuzzy flag, so you can run Auto-translate and then run the Fuzzy query to review the translation.

## Advanced Menu

### Migrate Product

This option can be used to migrate a product to another similar one. It was mostly designed for quickly getting a Netscape 6.0/7.x translation starting from a Mozilla Suite 0.9/1.0 one. What this option does is walk through the source product components, files and keys and try to match each one with exactly the same component, file and key in the destination product. If it exists and has the same original text, then the translation will be copied, marking the string as Fuzzy.



## **Assign License**

When you select this option, you will get a table view with Product, File and License columns. In this table, you may manually write the path in your file system to a file containing a license header valid for each file.

Nowadays, this option is not useful unless you plan to translate a product without license headers in the localizable files, as MT parses and cares about them (and it is a break of license to not respect and copy the license header in the original en-US file to the translated file, as this one is a derivative work from the en-US file).

## ***Help Menu***

### **About MozillaTranslator**

This is just an About dialog with a funny talking dinosaur. :-)



# Keyboard shortcut reference

## ***Main menu options accelerator keys***

These are the accelerator keys used for main menu options (invoked with [Alt]+[key]):

[F] -> File  
[I] -> Import  
[X] -> Export  
[E] -> Edit  
[A] -> Advanced  
[H] -> Help

## ***Common options shortcuts***

These are the accelerator keys used for common menu options (invoked with [Ctrl]+[key]):

Reserved for common use:

[C] -> Copy  
[X] -> Cut  
[V] -> Paste

[M] File / Manage Products  
[U] File / Update Product  
[S] File / Save Glossary  
[T] File / Save Settings  
[Q] File / Quit

[O] Import / File

[L] Export / File  
[J] Export / JAR  
[I] Export / XPI

[H] Edit / Chrome View  
[A] Edit / QA Queries / All above at once  
[F] Edit / Search  
[R] Edit / Replace  
[E] Edit / Edit phrase