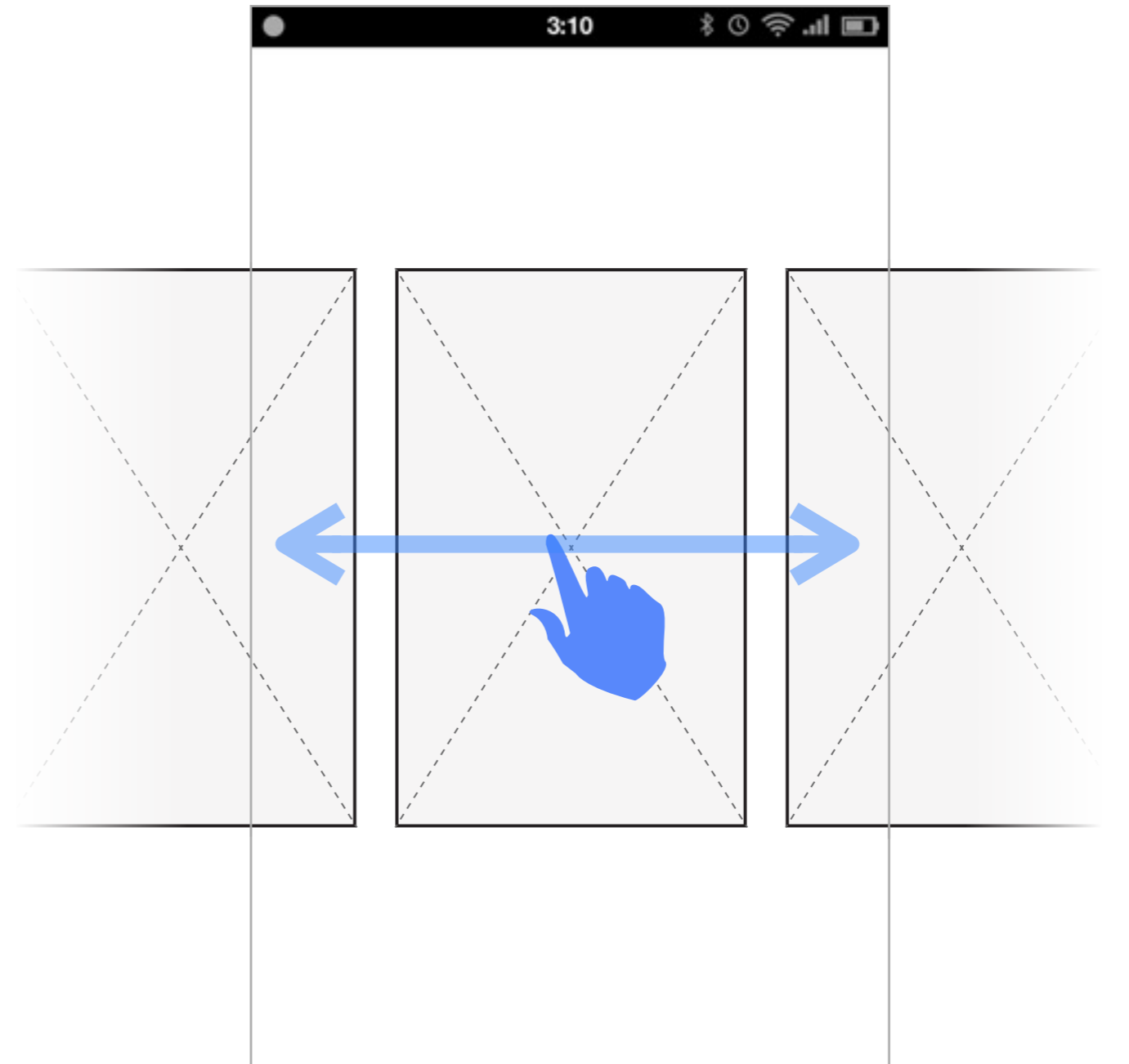


Cards view

The Cards view presents open apps as “cards”: screen captures of apps. Cards are arranged in a horizontal line, sized so that approximately 1.5 cards are always visible.

The Cards view will include multiple options, making it easy for partners to customize:

- **Ordering:**
Chronologically or User Defined
- **User Sorting:**
On / Off
- **Manual Closing:**
On / Off
- **Display App Icons:**
On / Off
- **Scrolling:**
Inertial / Snapping
- **Include Grid view as Card:**
On / Off
- **App First-in-Order**
- **App Cannot-be-Closed**



(P1) User can browse open apps

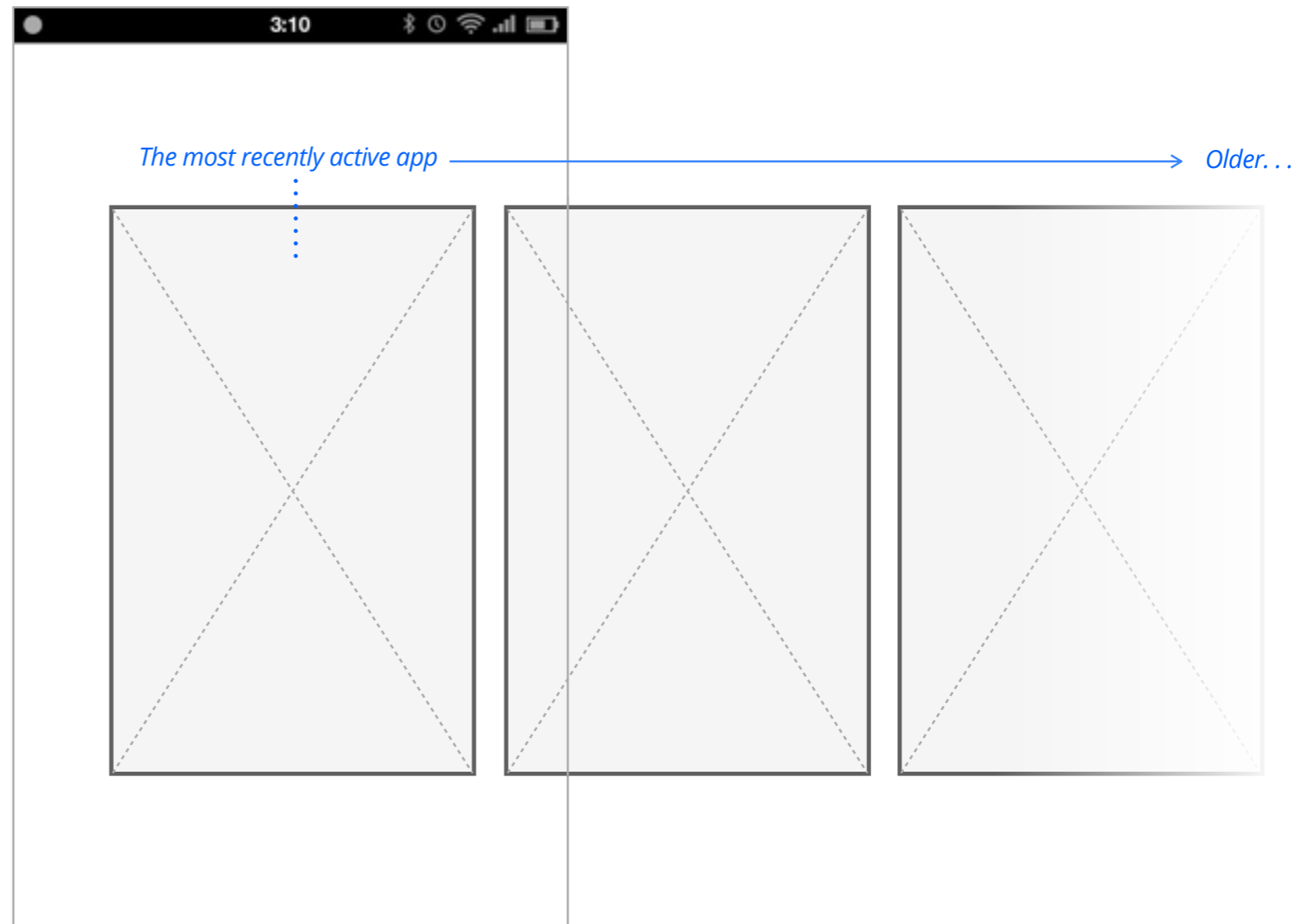
Cards view Option

Order: Chronological

There are two options for Cards view ordering: each with slightly different behaviour: **Chronological**, or **User Defined**.

With **Chronological** sorting:

- **User Sorting: Off**
Cards are automatically arranged with the most recently active on the far left, and the oldest on the far right.
- **Manual Closing: On**
Users can close apps manually. The system can also close them automatically, removing the oldest to keep the list from growing too long in length, and/or to avoid performance problems.
- **Scrolling: Inertial**
- When the user enters the view, the most recently active app is centered on screen.

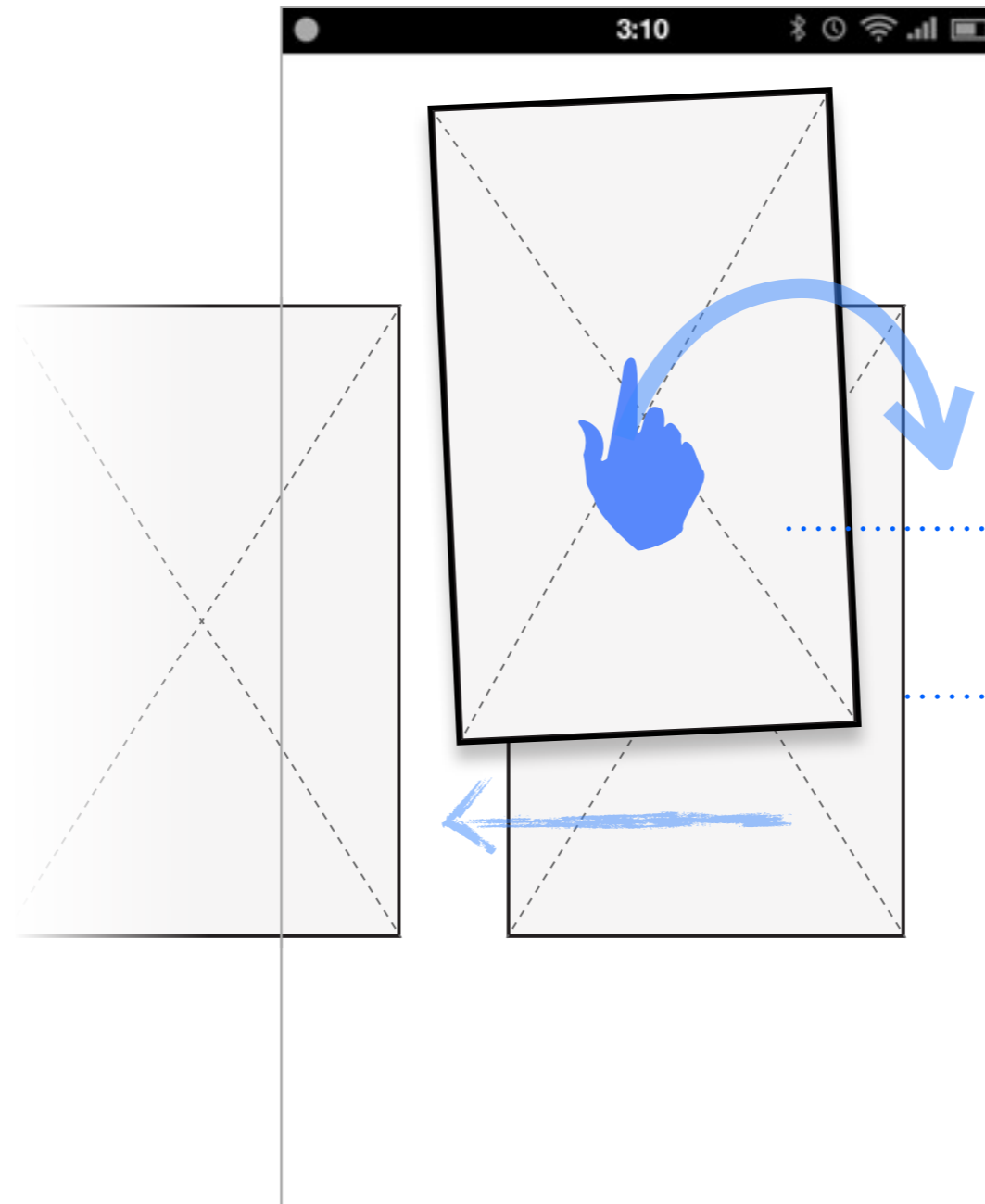


Cards view Option

Order: User Defined

With **User Defined** sorting:

- **User Sorting: On**
This allows users to freely re-order the cards. There is no enforced chronology.
- **Manual Closing: On**
Users can close apps manually. There is no automatic closing.
- As apps are opened, they are added to the far right (last in the list)
- **Scrolling: Snapping**
- When the user enters the view, their previous viewing position is remembered and retained.

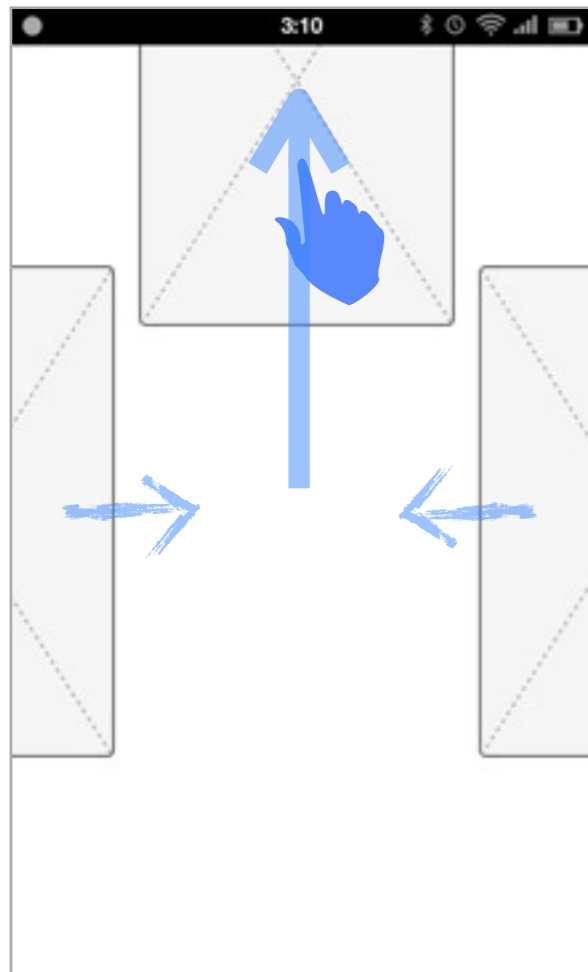


Option: User Sorting

When enabled, User Sorting enables users to re-order cards.

- The user presses-and-holds a card to “grab” it, and can then drag it into a new position.
- As the user drags left and right, other cards slide out of the way.
- As the user drags closer to an edge of the screen, the view gradually pans in that direction, panning faster to closer the user gets to the edge.

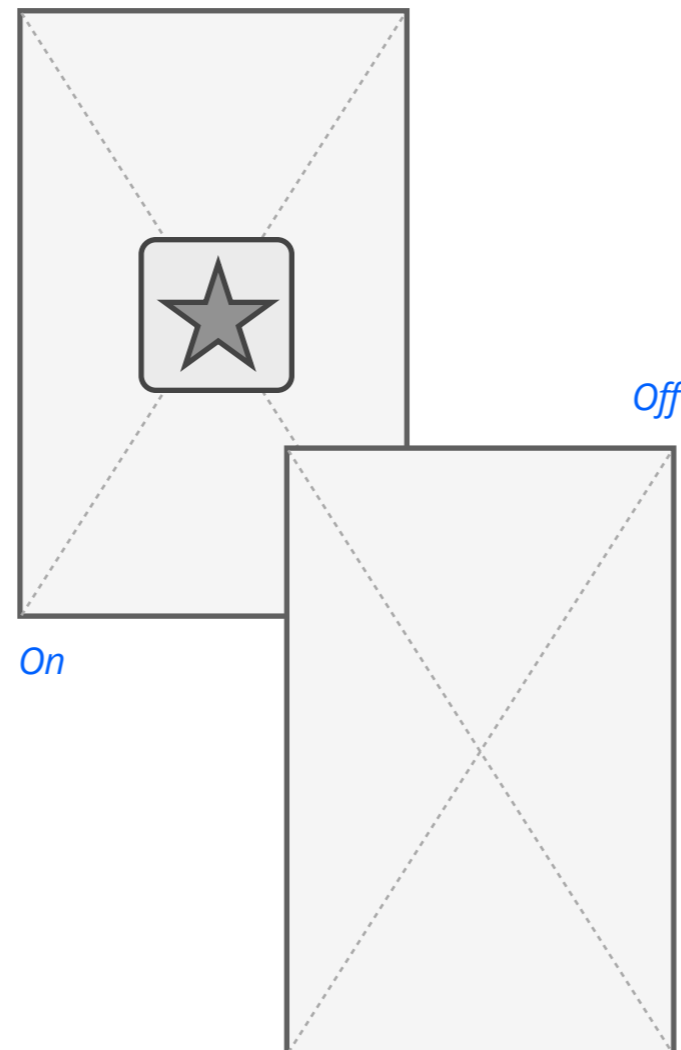
Cards view Option Manual Closing



On

When enabled, **Manual Closing** enables users to “close” cards (and therefore apps) by dragging them upwards, off screen, with a press and flick gesture. This makes it easy for users to currate their apps.

Cards view Option Display App Icons

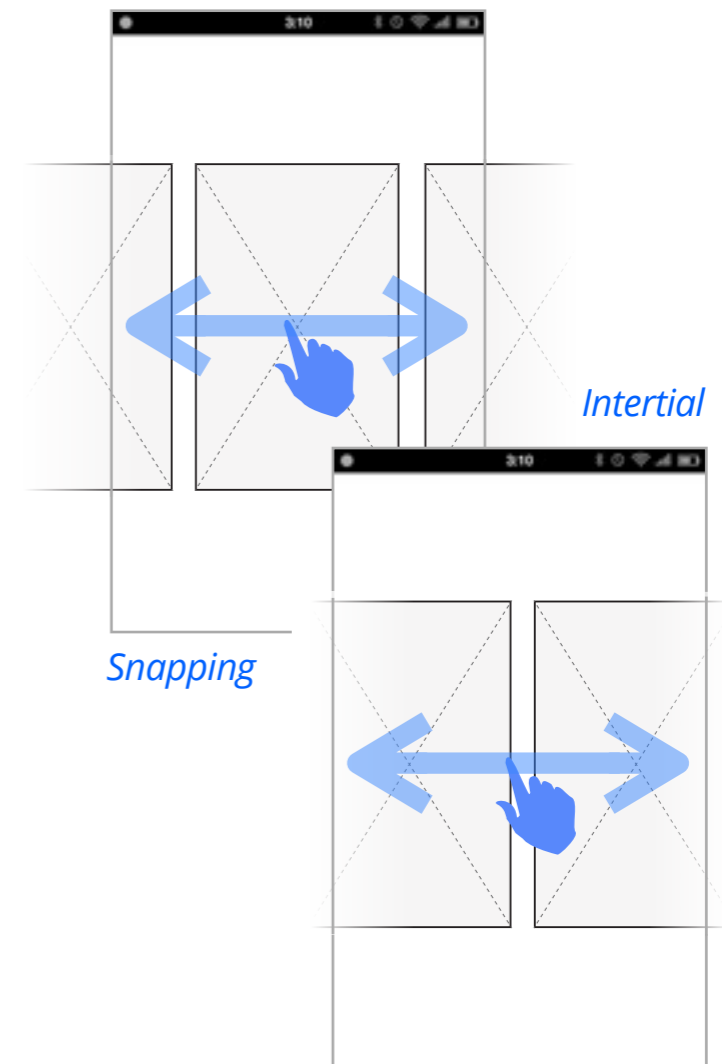


On

Off

When enabled, **Display App Icons** displays the icon of each app atop its card. This can make it easier to identify which app a card represents.

Cards view Option Scrolling

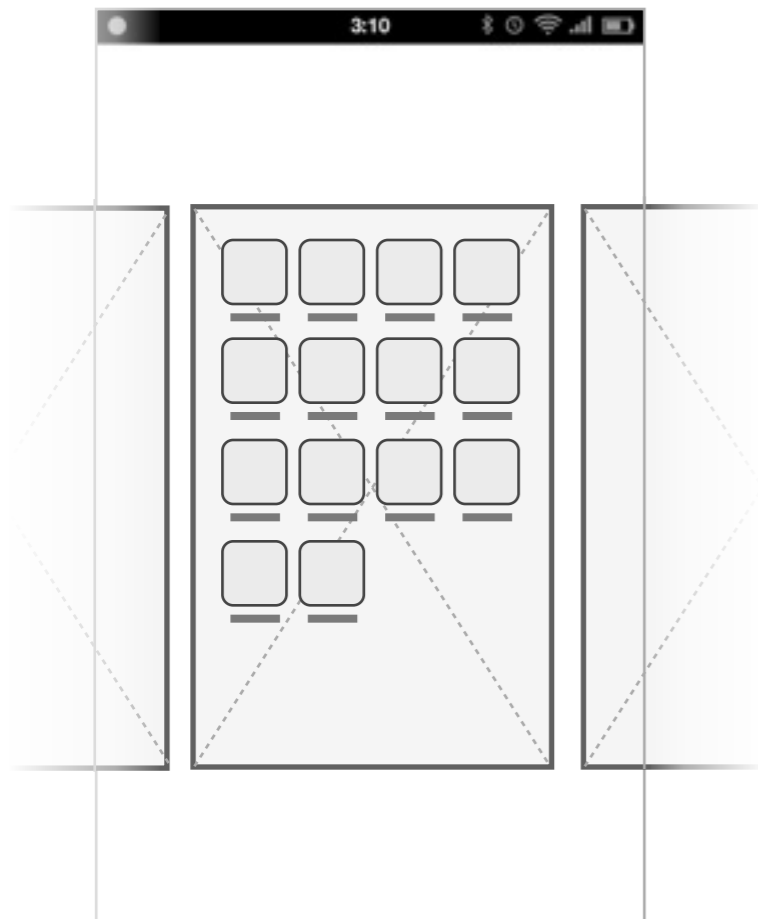


Snapping

Inertial

Inertial scrolling is free and physics-based, (like most lists in Gaia). The stronger the gesture, the faster and farther the list will scroll. **Snapping scrolling** moves the list one card at a time, and snaps the list so the current card is centered in the view.

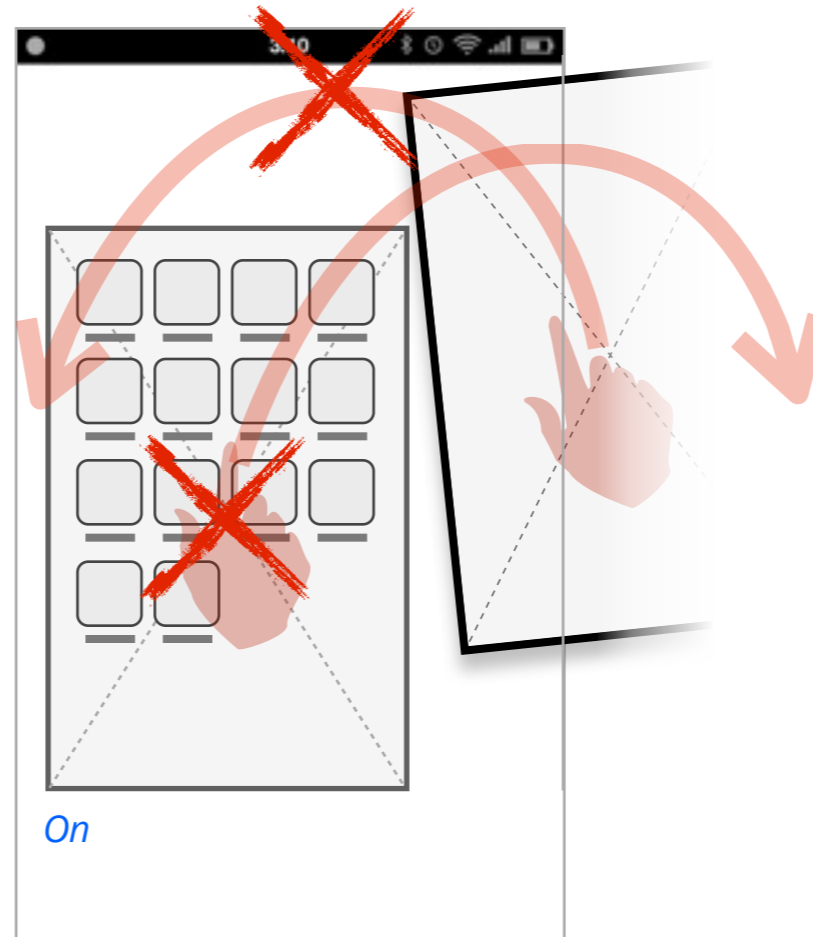
Cards view Option Include Grid view as Card



On

When enabled, **Include Grid view as Card** creates a card for the Grid view. This makes it easy for the user to get to their apps from the Card view.

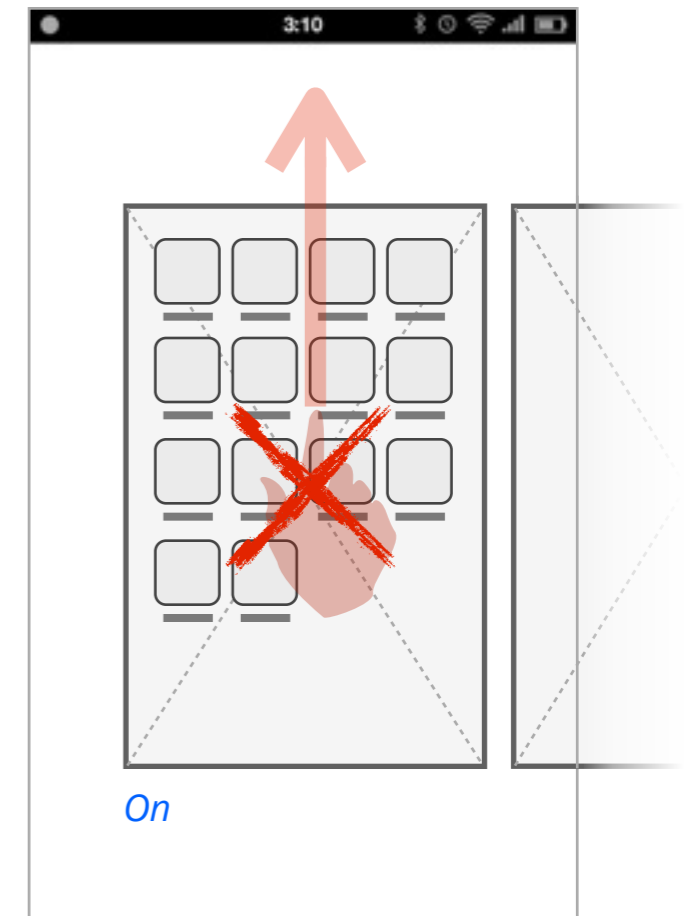
Cards view Option App First-in-Order



On

App First-in-Order is an individual app setting. When turned on, it locks the selected app to the first (far left) in the Card order. The user cannot Sort the card (press-and-hold has no effect), and other cards cannot be dragged to its left. Putting the app first in order makes it easier to access.

Cards view Option App Cannot-be-Closed



On

App Cannot-be-Closed is an individual app setting. When turned on, it makes the app immune to manual or automatic closing. This setting can be enabled for particularly important apps.